

# ANALOG BRUSHLESS PWM SERVO AMPLIFIERS MOUNTING CONFIGURATIONS

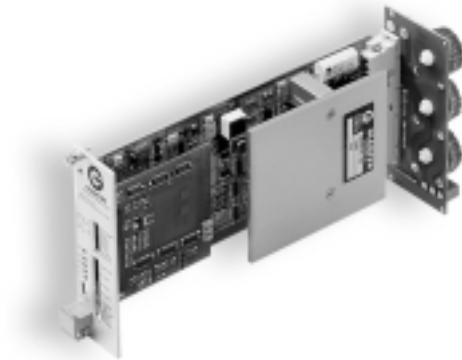
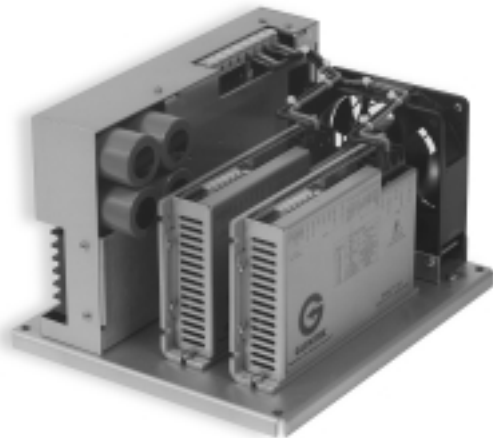
## *Stand-Alone*

The Stand Alone mounting configuration consists of a servo amplifier, DC bus power supply, regen clamp and dumping resistor (most models), in-rush current limiting protection at power-on and a cooling fan. This package is used for single and multi-axis applications that require direct AC operation (no transformer required).



## *Module*

The Module mounting configuration consists of a servo amplifier only and does not include the DC bus power supply. This package offers the smallest mechanical form factor and is a very cost effective solution for single and multi-axis applications where the customer provides the DC bus supply and forced air cooling.



## *Multi-Axis*

The Multi-Axis mounting configuration consists of an open frame chassis with DC bus power supply, regen clamp and dumping resistor, in-rush current limiting protection at power-on and cooling fans. It is available in either two or four axis chassis configurations and is more cost effective than stand alone versions as there is one common DC bus supply that is bused to the individual amplifier modules on the chassis. It can also be operated directly from the AC line (no transformer required).

## *3U Plug-In*

The 3U Plug-In mounting configuration consists of an amplifier module without a DC bus power supply. It is designed to be plugged into a custom backplane. This type of package is commonly used in applications where downtime must be kept to a minimum.

Glentek, Inc.

208 Standard Street • El Segundo, California 90245 USA  
(310) 322-3026 • (310) 322-7709 Fax • [www.glentek.com](http://www.glentek.com)