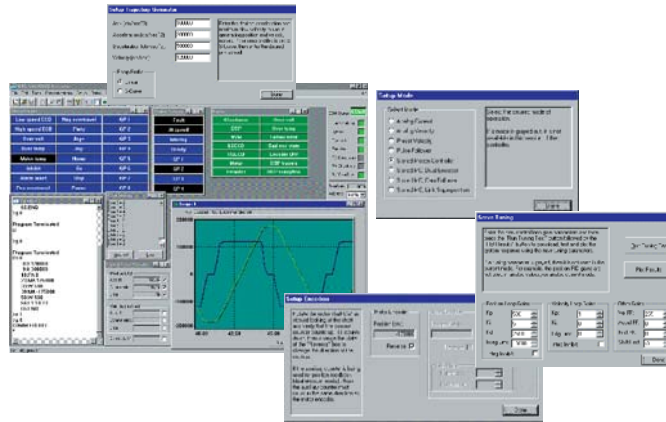


OMEGA SERIES DIGITAL PWM BRUSHLESS SERVO AMPLIFIERS ELECTRICAL RATINGS

Motion Maestro Set-up & Tuning Software



Glentek's Windows™ based Motion Maestro™ software provides ease of set-up and tuning with no previous programming experience required. This software is Windows™ 95/98/2000 and NT compatible.

Electrical Ratings & Available Mounting Configurations

Model Number	Input Power	Output Power (current)		Available Mounting Configurations
		Continuous	Peak	
SMA9807	30-370 VDC	7	14	Module
SMA9807	22-50 VAC, 50-135 VAC or 135 to 260 VAC	7	14	Stand-Alone and Multi-Axis
SMB9815LP	30-370 VDC	10	20	Module
SMC9815LP	30-370 VDC	10	20	Module
SMB9815LP	110-130 VAC or 208-240 VAC	10	20	Stand-Alone and Multi-Axis
SMC9815LP	110-130 VAC or 208-240 VAC	10	20	Stand-Alone and Multi-Axis
SMB9815	30-370 VDC	15	30	Module
SMC9815	30-370 VDC	15	30	Module
SMB9815	110-130 VAC or 208-240 VAC	15	30	Stand-Alone and Multi-Axis
SMC9815	110-130 VAC or 208-240 VAC	15	30	Stand-Alone and Multi-Axis
SMB9815HP	30-370 VDC	20	40	Module
SMC9815HP	30-370 VDC	20	40	Module
SMB9815HP	110-130 VAC or 208-240 VAC	20	40	Stand-Alone and Multi-Axis
SMC9815HP	110-130 VAC or 208-240 VAC	20	40	Stand-Alone and Multi-Axis
SMA9830	110-130 VAC or 208-240 VAC	30	60	Stand-Alone
SMC9845	50-135 VAC or 135-260 VAC	45	90	Stand-Alone
SMC9875	50-135 VAC or 135-260 VAC	75	150	Stand-Alone
SMC98100	50-135 VAC or 135-260 VAC	100	150	Stand-Alone

The difference between SMB model and SMC model.

1. SMB model†uses BUS input to power up the logic board and encoder.

Advantage: Only requires one input power source to operate the amplifier

Disadvantage: In case of input power failure, the amplifier will shut down completely including the logic board and encoder.

2. SMC model†requires external 24VDC input to power up the logic board and encoder.

Advantage: As long as the external 24VDC stays on, the logic board and encoder power will stay alive even if the BUS input shuts down.

Disadvantage: Needs two separate input power sources (external 24VDC & BUS input) to operate the amplifier



208 Standard Street • El Segundo, California 90245 USA
(310) 322-3026 • (310) 322-7709 Fax • www.glentek.com