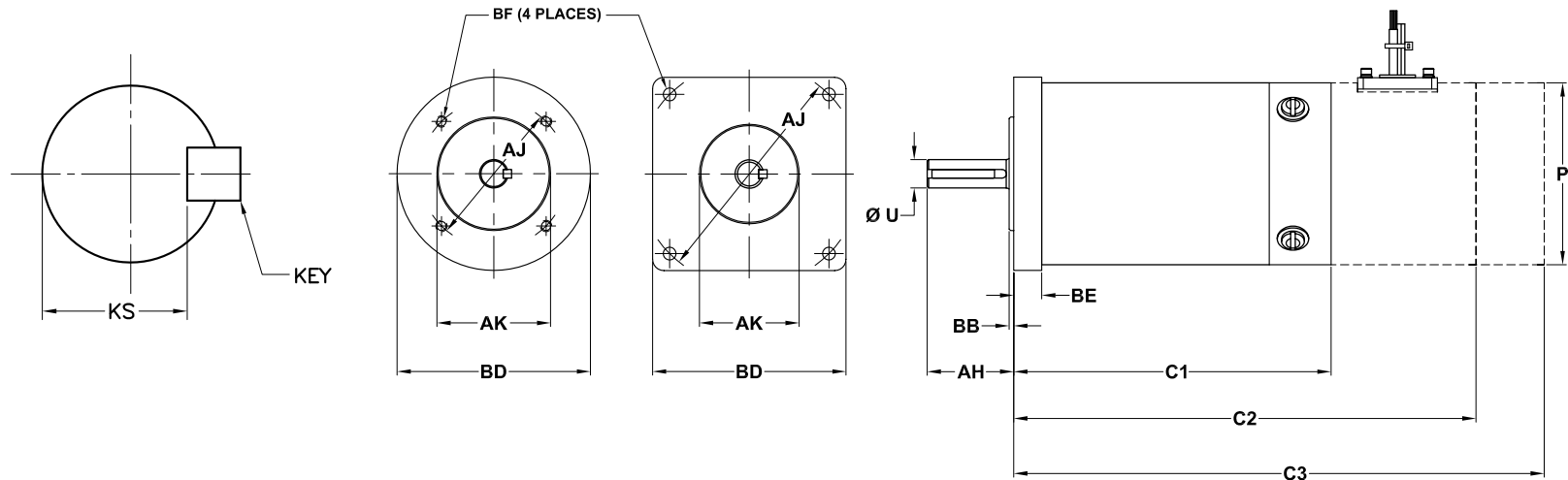


GLENTEK GM2320 & GM2340 DC BRUSH SERVO MOTOR DIMENSIONS

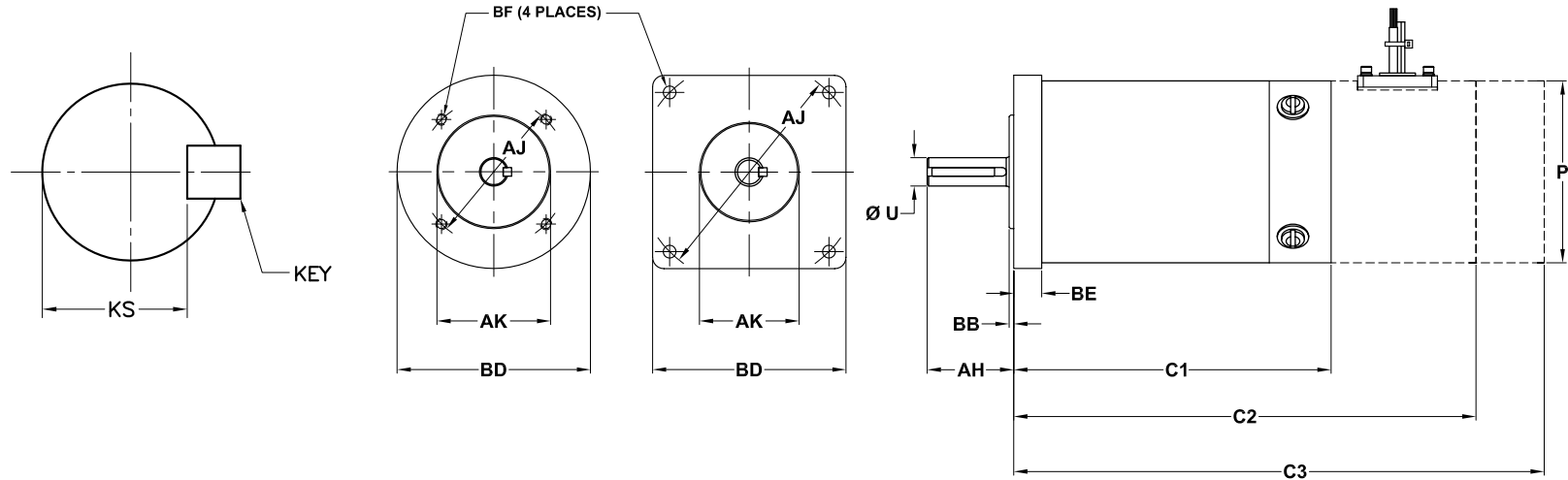


Model Number	Flange Type	Lbs (Kg)	C1	C2	C3	P (max)	Shaft				Flange/Face				Mounting Hole		
							AH	U (max)	KEY	KS	AJ	AK	BB	BD	BE (max)	BF Dia.	Tap
GM2320	Round	3.0 (1.4)	3.69 (93.7)	5.68 (144.3)	7.04 (178.8)	2.25 (57.2)	1.00 (25.4)	0.2500 (6.350)	-	-	1.531 (38.89)	1.000 (25.40)	0.10 (2.5)	2.00 (50.8)	0.30 (7.6)	-	6-32 X .38
	Square	3.0 (1.4)	3.69 (93.7)	5.68 (144.3)	7.04 (178.8)	2.25 (57.2)	1.00 (25.4)	0.2500 (6.350)	-	-	2.625 (66.68)	1.500 (38.10)	0.10 (2.5)	2.25 (57.2)	0.30 (7.6)	0.213 (5.41)	THRU
	NEMA 23	3.0 (1.4)	3.69 (93.7)	5.68 (144.3)	7.04 (178.8)	2.25 (57.2)	0.81 (20.6)	0.2500 (6.350)	-	-	2.625 (66.68)	1.500 (38.10)	0.10 (2.5)	2.25 (57.2)	0.30 (7.6)	0.213 (5.41)	THRU
GM2340	Round	4.0 (1.8)	5.3 (134.6)	7.29 (185.2)	8.65 (219.7)	2.25 (57.2)	1.00 (25.4)	0.2500 (6.350)	-	-	1.531 (38.89)	1.000 (25.40)	0.10 (2.5)	2.00 (50.8)	0.30 (7.6)	-	6-32 X .38
	Square	4.0 (1.8)	5.3 (134.6)	7.29 (185.2)	8.65 (219.7)	2.25 (57.2)	1.00 (25.4)	0.2500 (6.350)	-	-	2.625 (66.68)	1.500 (38.10)	0.10 (2.5)	2.25 (57.2)	0.30 (7.6)	0.213 (5.41)	THRU
	NEMA 23	4.0 (1.8)	5.3 (134.6)	7.29 (185.2)	8.65 (219.7)	2.25 (57.2)	0.81 (20.6)	0.2500 (6.350)	-	-	2.625 (66.68)	1.500 (38.10)	0.10 (2.5)	2.25 (57.2)	0.30 (7.6)	0.213 (5.41)	THRU

Dimensions are in **inches** (mm)

C1 = BARE MOTOR, C2 = MOTOR WITH TACHOMETER OR ENCODER, C3 = MOTOR WITH TACHOMETER AND ENCODER

GLENTEK GM3310, GM3320, & GM3330 DC BRUSH SERVO MOTOR DIMENSIONS

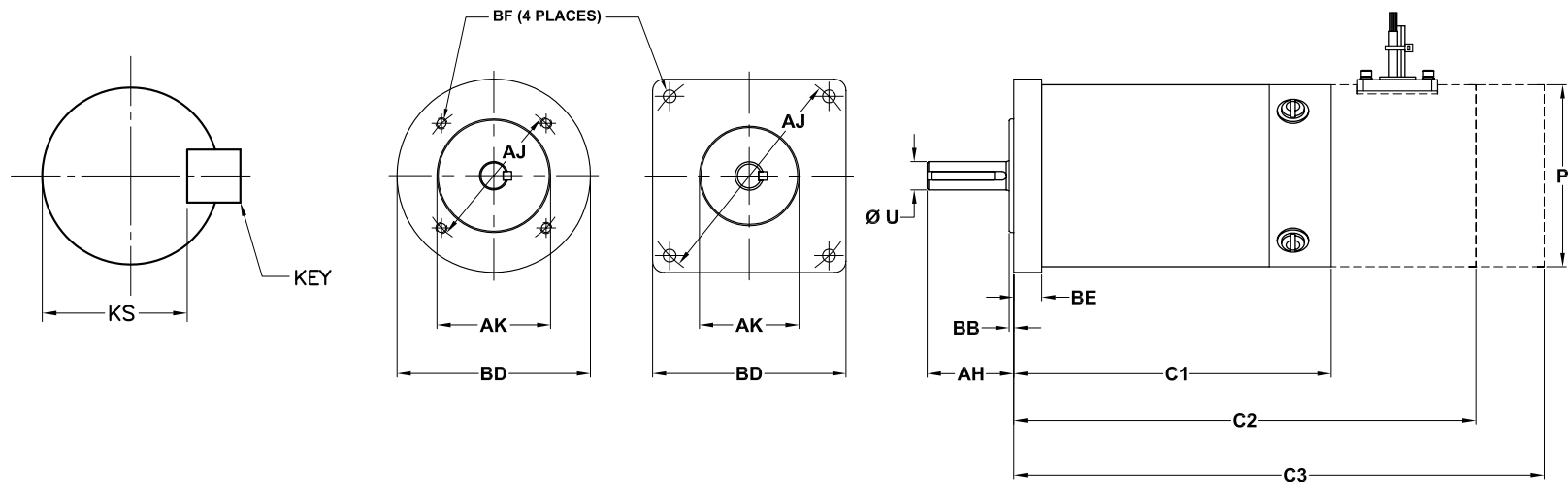


Model Number	Flange Type	Lbs (Kg)	C1	C2	C3	P (max)	Shaft				Flange/Face				Mounting Hole		
							AH	U (max)	KEY	KS	AJ	AK	BB	BD	BE (max)	BF Dia.	Tap
GM3310	Round	5.0 (2.3)	3.72 (94.5)	6.45 (163.8)	7.71 (195.8)	3.25 (82.6)	1.87 (47.5)	0.5000 (12.700)	.125 SQ. X 1.00	.420-.430	2.500 (63.50)	3.000 (76.20)	0.37 (9.4)	3.25 (82.6)	0.22 (5.6)	-	10-32 X .50
	Square	5.0 (2.3)	3.98 (101.1)	6.71 (170.4)	7.97 (202.4)	3.25 (82.6)	1.60 (40.6)	0.5000 (12.700)	.125 SQ. X 1.00	.420-.430	3.875 (98.43)	2.875 (73.03)	0.10 (2.5)	3.25 (82.6)	0.48 (12.2)	0.220 (5.59)	THRU
	NEMA 34	5.0 (2.3)	3.98 (101.1)	6.71 (170.4)	7.97 (202.4)	3.25 (82.6)	1.19 (30.2)	0.3750 (9.530)	-	-	3.875 (98.43)	2.875 (73.03)	0.10 (2.5)	3.25 (82.6)	0.48 (12.2)	0.220 (5.59)	THRU
GM3320	Round	7.0 (3.2)	4.34 (110.2)	7.07 (179.6)	8.33 (211.6)	3.25 (82.6)	1.87 (47.5)	0.5000 (12.700)	.125 SQ. X 1.00	.420-.430	2.500 (63.50)	3.000 (76.20)	0.37 (9.4)	3.25 (82.6)	0.22 (5.6)	-	10-32 X .50
	Square	7.0 (3.2)	4.61 (117.1)	7.34 (186.4)	8.6 (218.4)	3.25 (82.6)	1.60 (40.6)	0.5000 (12.700)	.125 SQ. X 1.00	.420-.430	3.875 (98.43)	2.875 (73.03)	0.10 (2.5)	3.25 (82.6)	0.48 (12.2)	0.220 (5.59)	THRU
	NEMA 34	7.0 (3.2)	4.61 (117.1)	7.34 (186.4)	8.6 (218.4)	3.25 (82.6)	1.19 (30.2)	0.3750 (9.530)	-	-	3.875 (98.43)	2.875 (73.03)	0.10 (2.5)	3.25 (82.6)	0.48 (12.2)	0.220 (5.59)	THRU
GM3330	Round	8.0 (3.6)	5.65 (143.5)	8.38 (212.9)	9.64 (244.9)	3.25 (82.6)	1.87 (47.5)	0.5000 (12.700)	.125 SQ. X 1.00	.420-.430	2.500 (63.50)	3.000 (76.20)	0.37 (9.4)	3.25 (82.6)	0.22 (5.6)	-	10-32 X .50
	Square	8.0 (3.6)	5.92 (150.4)	8.65 (219.7)	9.91 (251.7)	3.25 (82.6)	1.60 (40.6)	0.5000 (12.700)	.125 SQ. X 1.00	.420-.430	3.875 (98.43)	2.875 (73.03)	0.10 (2.5)	3.25 (82.6)	0.48 (12.2)	0.220 (5.59)	THRU
	NEMA 34	8.0 (3.6)	5.92 (150.4)	8.65 (219.7)	9.91 (251.7)	3.25 (82.6)	1.19 (30.2)	0.3750 (9.530)	-	-	3.875 (98.43)	2.875 (73.03)	0.10 (2.5)	3.25 (82.6)	0.48 (12.2)	0.220 (5.59)	THRU

Dimensions are in **inches** (mm)

C1 = BARE MOTOR, C2 = MOTOR WITH TACHOMETER OR ENCODER, C3 = MOTOR WITH TACHOMETER AND ENCODER

GLENTEK GM3340 & GMR3340 DC BRUSH SERVO MOTOR DIMENSIONS

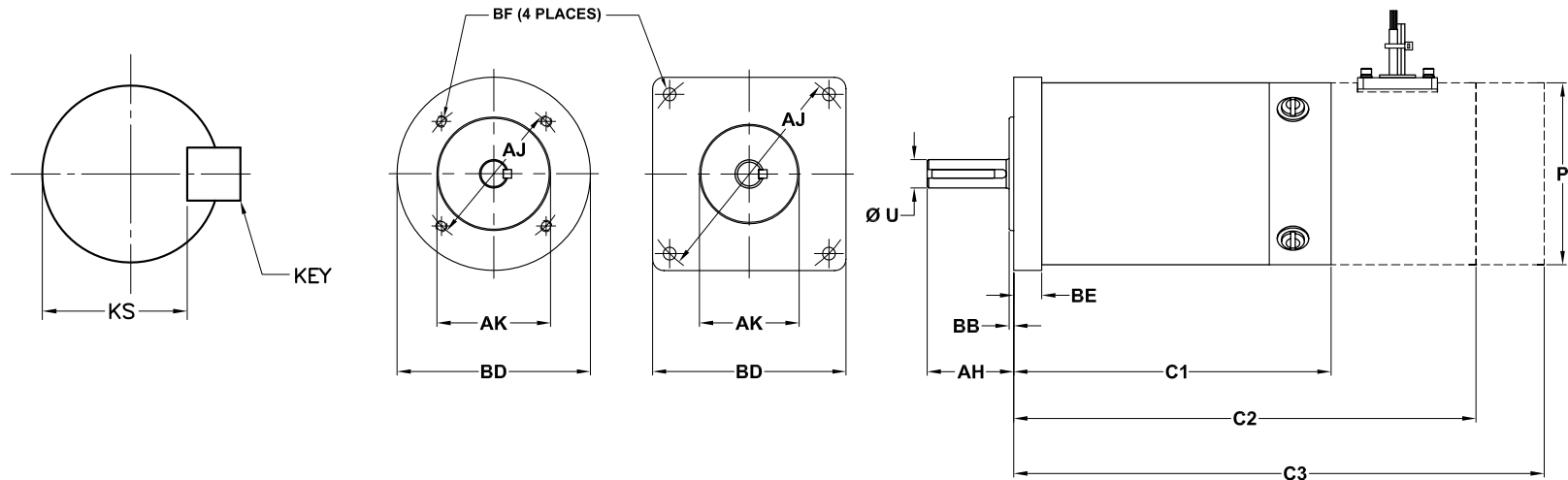


Model Number	Flange Type	Lbs (Kg)	C1	C2	C3	P (max)	Shaft				Flange/Face				Mounting Hole		
							AH	U (max)	KEY	KS	AJ	AK	BB	BD	BE (max)	BF Dia.	Tap
GM3340	Round	10.0 (4.5)	6.31 (160.3)	9.04 (229.6)	10.3 (261.6)	3.25 (82.6)	1.87 (47.5)	0.5000 (12.700)	.125 SQ. X 1.00	.420-.430	2.500 (63.50)	3.000 (76.20)	0.37 (9.4)	3.25 (82.6)	0.22 (5.6)	-	10-32 X .50
	Square	10.0 (4.5)	6.57 (166.9)	9.3 (236.2)	10.56 (268.2)	3.25 (82.6)	1.60 (40.6)	0.5000 (12.700)	.125 SQ. X 1.00	.420-.430	3.875 (98.43)	2.875 (73.03)	0.10 (2.5)	3.25 (82.6)	0.48 (12.2)	0.220 (5.59)	THRU
	NEMA 34	10.0 (4.5)	6.57 (166.9)	9.3 (236.2)	10.56 (268.2)	3.25 (82.6)	1.19 (30.2)	0.3750 (9.530)	-	-	3.875 (98.43)	2.875 (73.03)	0.10 (2.5)	3.25 (82.6)	0.48 (12.2)	0.220 (5.59)	THRU
GMR3340	Round	10.0 (4.5)	5.98 (151.9)	8.71 (221.2)	9.97 (253.2)	3.25 (82.6)	1.87 (47.5)	0.5000 (12.700)	.125 SQ. X 1.00	.420-.430	2.500 (63.50)	3.000 (76.20)	0.37 (9.4)	3.25 (82.6)	0.22 (5.6)	-	10-32 X .50
	Square	10.0 (4.5)	5.88 (149.4)	8.61 (218.7)	9.87 (250.7)	3.25 (82.6)	1.60 (40.6)	0.5000 (12.700)	.125 SQ. X 1.00	.420-.430	3.875 (98.43)	2.875 (73.03)	0.10 (2.5)	3.25 (82.6)	0.48 (12.2)	0.220 (5.59)	THRU
	NEMA 34	10.0 (4.5)	5.88 (149.4)	8.61 (218.7)	9.87 (250.7)	3.25 (82.6)	1.19 (30.2)	0.3750 (9.530)	-	-	3.875 (98.43)	2.875 (73.03)	0.10 (2.5)	3.25 (82.6)	0.48 (12.2)	0.220 (5.59)	THRU

Dimensions are in **inches** (mm)

C1 = BARE MOTOR, C2 = MOTOR WITH TACHOMETER OR ENCODER, C3 = MOTOR WITH TACHOMETER AND ENCODER

GLENTEK GM4010 DC BRUSH SERVO MOTOR DIMENSIONS

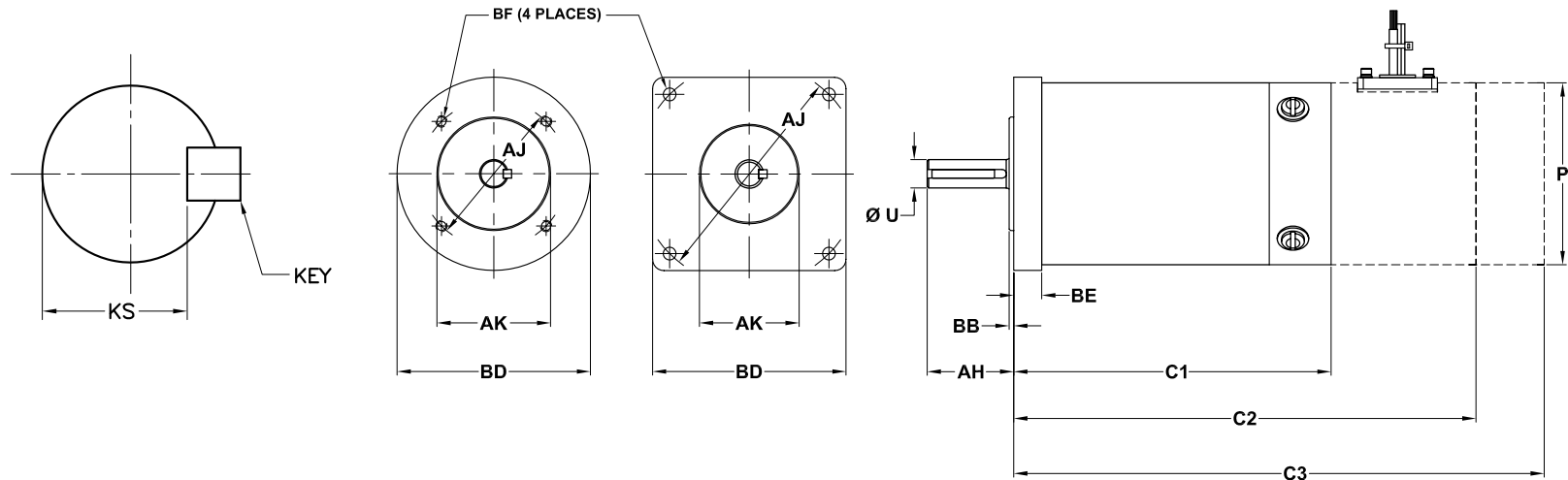


Model Number	Flange Type	Lbs (Kg)	C1	C2	C3	P (max)	Shaft				Flange/Face				Mounting Hole		
							AH	U (max)	KEY	KS	AJ	AK	BB	BD	BE (max)	BF Dia.	Tap
GM4010	Round	8.0 (3.6)	5.25 (133.4)	7.26 (184.4)	8.39 (213.1)	4.00 (101.6)	1.90 (48.3)	0.6250 (15.880)	.188 SQ. X 1.50	.507-.517	3.250 (82.55)	2.498 (63.45)	0.10 (2.5)	4.00 (101.6)	0.62 (15.7)	-	1/4-20 X .50
	M1 (Square)	8.0 (3.6)	5.25 (133.4)	7.26 (184.4)	8.39 (213.1)	4.00 (101.6)	1.90 (48.3)	0.6250 (15.880)	.188 SQ. X 1.50	.507-.517	4.950 (125.73)	2.187 (55.55)	0.06 (1.5)	4.25 (108.0)	0.44 (11.2)	0.281 (7.14)	THRU
	M2 (Square)	8.0 (3.6)	5.25 (133.4)	7.26 (184.4)	8.39 (213.1)	4.00 (101.6)	1.90 (48.3)	0.6250 (15.880)	.188 SQ. X 1.50	.507-.517	5.741 (145.82)	3.000 (76.20)	0.10 (2.5)	5.00 (127.0)	0.44 (11.2)	0.281 (7.14)	THRU
	M3 (Square)	8.0 (3.6)	5.25 (133.4)	7.26 (184.4)	8.39 (213.1)	4.00 (101.6)	1.90 (48.3)	0.6250 (15.880)	.188 SQ. X 1.50	.507-.517	5.875 (149.23)	4.500 (114.30)	0.10 (2.5)	5.00 (127.0)	0.44 (11.2)	-	3/8-16 THRU
	NEMA 42	8.0 (3.6)	5.25 (133.4)	7.26 (184.4)	8.39 (213.1)	4.00 (101.6)	1.32 (33.5)	0.6250 (15.880)	.188 SQ. X 1.50	.507-.517	4.950 (125.73)	2.187 (55.55)	0.06 (1.5)	4.25 (108.0)	0.44 (11.2)	0.281 (7.14)	THRU
	NEMA 56C	8.0 (3.6)	5.25 (133.4)	7.26 (184.4)	8.39 (213.1)	4.00 (101.6)	2.06 (52.3)	0.6250 (15.880)	.188 SQ. X 1.50	.507-.517	5.875 (149.23)	4.500 (114.30)	0.09 (2.3)	6.50 (165.1)	0.44 (11.2)	-	3/8-16 THRU

Dimensions are in **inches** (mm)

C1 = BARE MOTOR, C2 = MOTOR WITH TACHOMETER OR ENCODER, C3 = MOTOR WITH TACHOMETER AND ENCODER

GLENTEK GM4020 DC BRUSH SERVO MOTOR DIMENSIONS

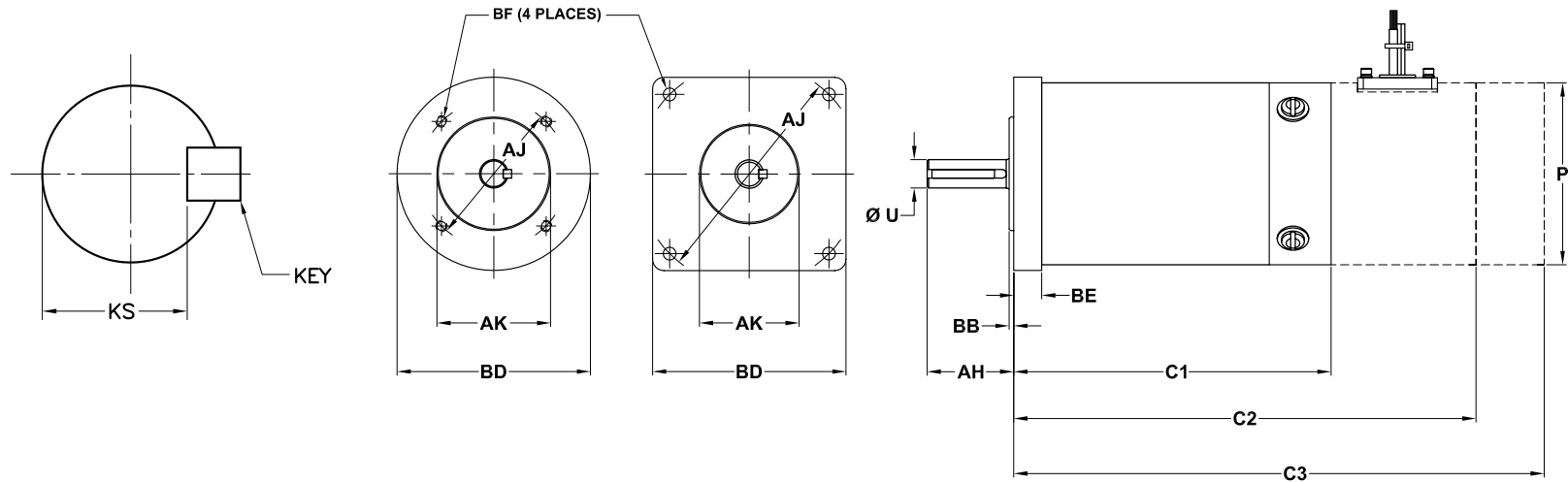


Model Number	Flange Type	Lbs (Kg)	C1	C2	C3	P (max)	Shaft				Flange/Face				Mounting Hole		
							AH	U (max)	KEY	KS	AJ	AK	BB	BD	BE (max)	BF Dia.	Tap
GM4020	Round	12.0 (5.5)	6.56 (166.6)	8.57 (217.7)	9.7 (246.4)	4.00 (101.6)	1.90 (48.3)	0.6250 (15.880)	.188 SQ. X 1.50	.507-.517	3.250 (82.55)	2.498 (63.45)	0.10 (2.5)	4.00 (101.6)	0.62 (15.7)	-	1/4-20 X .50
	M1 (Square)	12.0 (5.5)	6.56 (166.6)	8.57 (217.7)	9.7 (246.4)	4.00 (101.6)	1.90 (48.3)	0.6250 (15.880)	.188 SQ. X 1.50	.507-.517	4.950 (125.73)	2.187 (55.55)	0.06 (1.5)	4.25 (108.0)	0.44 (11.2)	0.281 (7.14)	THRU
	M2 (Square)	12.0 (5.5)	6.56 (166.6)	8.57 (217.7)	9.7 (246.4)	4.00 (101.6)	1.90 (48.3)	0.6250 (15.880)	.188 SQ. X 1.50	.507-.517	5.741 (145.82)	3.000 (76.20)	0.10 (2.5)	5.00 (127.0)	0.44 (11.2)	0.281 (7.14)	THRU
	M3 (Square)	12.0 (5.5)	6.56 (166.6)	8.57 (217.7)	9.7 (246.4)	4.00 (101.6)	1.90 (48.3)	0.6250 (15.880)	.188 SQ. X 1.50	.507-.517	5.875 (149.23)	4.500 (114.30)	0.10 (2.5)	5.00 (127.0)	0.44 (11.2)	-	3/8-16 THRU
	NEMA 42	12.0 (5.5)	6.56 (166.6)	8.57 (217.7)	9.7 (246.4)	4.00 (101.6)	1.32 (33.5)	0.6250 (15.880)	.188 SQ. X 1.50	.507-.517	4.950 (125.73)	2.187 (55.55)	0.06 (1.5)	4.25 (108.0)	0.44 (11.2)	0.281 (7.14)	THRU
	NEMA 56C	12.0 (5.5)	6.56 (166.6)	8.57 (217.7)	9.7 (246.4)	4.00 (101.6)	2.06 (52.3)	0.6250 (15.880)	.188 SQ. X 1.50	.507-.517	5.875 (149.23)	4.500 (114.30)	0.09 (2.3)	6.50 (165.1)	0.44 (11.2)	-	3/8-16 THRU

Dimensions are in **inches** (mm)

C1 = BARE MOTOR, C2 = MOTOR WITH TACHOMETER OR ENCODER, C3 = MOTOR WITH TACHOMETER AND ENCODER

GLENTEK GM4040 DC BRUSH SERVO MOTOR DIMENSIONS

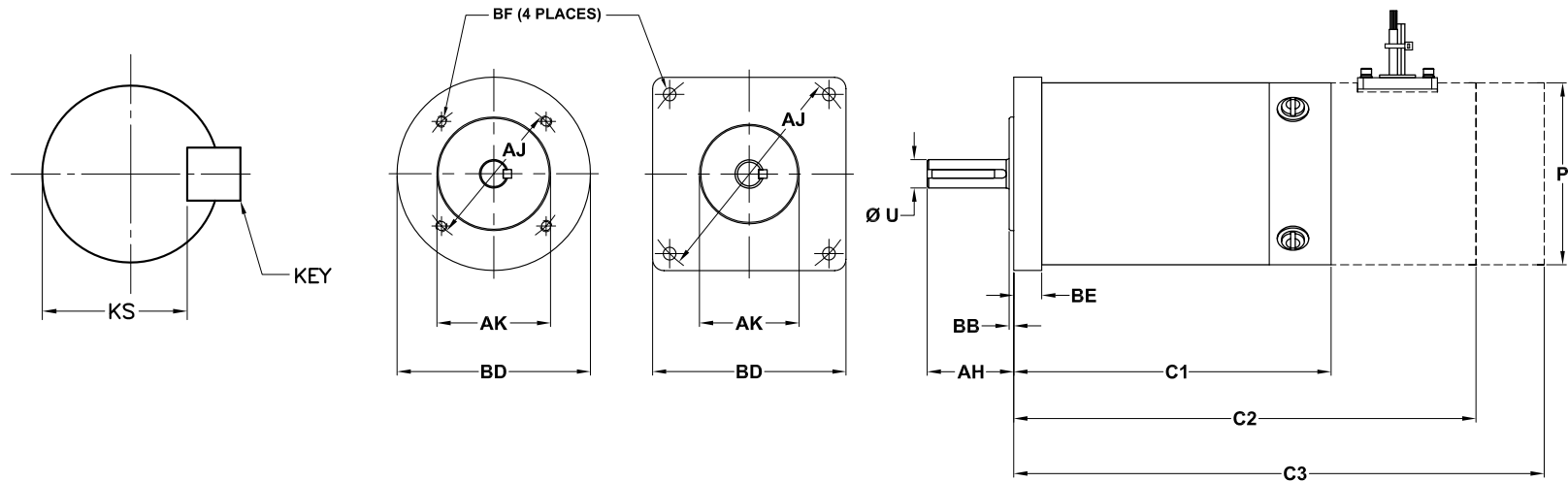


Model Number	Flange Type	Lbs (Kg)	C1	C2	C3	P (max)	Shaft				Flange/Face				Mounting Hole		
							AH	U (max)	KEY	KS	AJ	AK	BB	BD	BE (max)	BF Dia.	Tap
GM4040	Round	17.0 (7.7)	8.63 (219.2)	10.64 (270.3)	11.77 (299.0)	4.00 (101.6)	1.90 (48.3)	0.6250 (15.880)	.188 SQ. X 1.50	.507-.517	3.250 (82.55)	2.498 (63.45)	0.10 (2.5)	4.00 (101.6)	0.62 (15.7)	-	1/4-20 X .50
	M1 (Square)	17.0 (7.7)	8.63 (219.2)	10.64 (270.3)	11.77 (299.0)	4.00 (101.6)	1.90 (48.3)	0.6250 (15.880)	.188 SQ. X 1.50	.507-.517	4.950 (125.73)	2.187 (55.55)	0.06 (1.5)	4.25 (108.0)	0.44 (11.2)	0.281 (7.14)	THRU
	M2 (Square)	17.0 (7.7)	8.63 (219.2)	10.64 (270.3)	11.77 (299.0)	4.00 (101.6)	1.90 (48.3)	0.6250 (15.880)	.188 SQ. X 1.50	.507-.517	5.741 (145.82)	3.000 (76.20)	0.10 (2.5)	5.00 (127.0)	0.44 (11.2)	0.281 (7.14)	THRU
	M3 (Square)	17.0 (7.7)	8.63 (219.2)	10.64 (270.3)	11.77 (299.0)	4.00 (101.6)	1.90 (48.3)	0.6250 (15.880)	.188 SQ. X 1.50	.507-.517	5.875 (149.23)	4.500 (114.30)	0.10 (2.5)	5.00 (127.0)	0.44 (11.2)	-	3/8-16 THRU
	NEMA 42	17.0 (7.7)	8.63 (219.2)	10.64 (270.3)	11.77 (299.0)	4.00 (101.6)	1.32 (33.5)	0.6250 (15.880)	.188 SQ. X 1.50	.507-.517	4.950 (125.73)	2.187 (55.55)	0.06 (1.5)	4.25 (108.0)	0.44 (11.2)	0.281 (7.14)	THRU
	NEMA 56C	17.0 (7.7)	8.63 (219.2)	10.64 (270.3)	11.77 (299.0)	4.00 (101.6)	2.06 (52.3)	0.6250 (15.880)	.188 SQ. X 1.50	.507-.517	5.875 (149.23)	4.500 (114.30)	0.09 (2.3)	6.50 (165.1)	0.44 (11.2)	-	3/8-16 THRU

Dimensions are in **inches** (mm)

C1 = BARE MOTOR, C2 = MOTOR WITH TACHOMETER OR ENCODER, C3 = MOTOR WITH TACHOMETER AND ENCODER

GLENTEK GM4050 DC BRUSH SERVO MOTOR DIMENSIONS

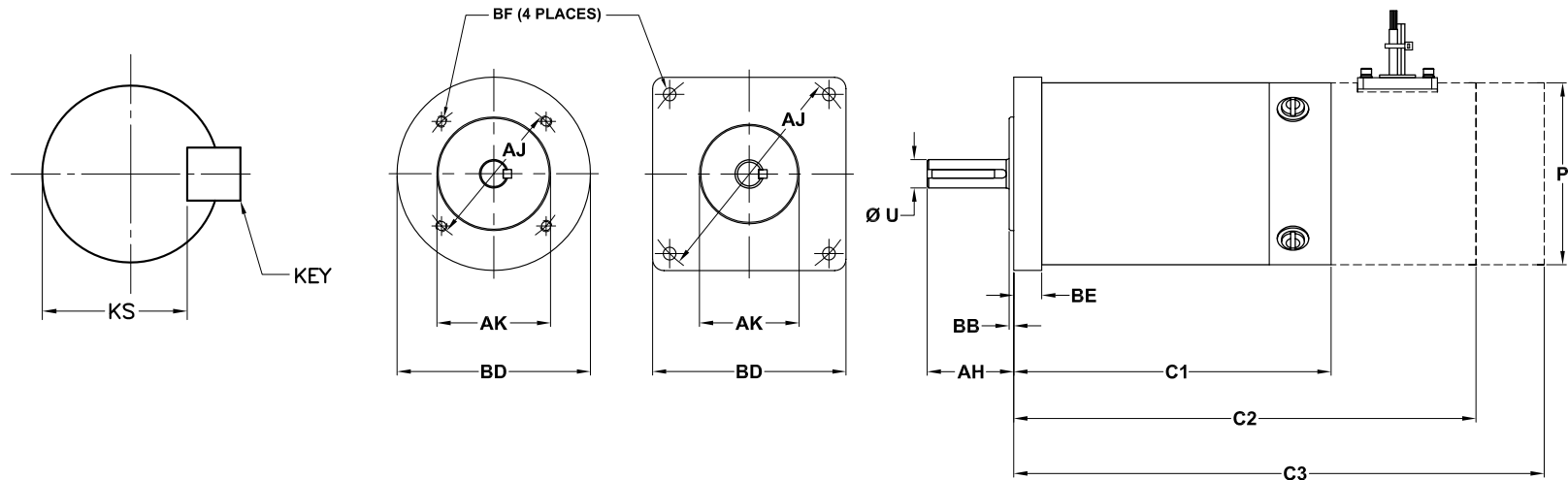


Model Number	Flange Type	Lbs (Kg)	C1	C2	C3	P (max)	Shaft				Flange/Face				Mounting Hole		
							AH	U (max)	KEY	KS	AJ	AK	BB	BD	BE (max)	BF Dia.	Tap
GM4050	Round	20.0 (9.1)	9.63 (244.6)	11.64 (295.7)	12.77 (324.4)	4.00 (101.6)	1.90 (48.3)	0.6250 (15.880)	.188 SQ. X 1.50	.507-.517	3.250 (82.55)	2.498 (63.45)	0.10 (2.5)	4.00 (101.6)	0.62 (15.7)	-	1/4-20 X .50
	M1 (Square)	20.0 (9.1)	9.63 (244.6)	11.64 (295.7)	12.77 (324.4)	4.00 (101.6)	1.90 (48.3)	0.6250 (15.880)	.188 SQ. X 1.50	.507-.517	4.950 (125.73)	2.187 (55.55)	0.06 (1.5)	4.25 (108.0)	0.44 (11.2)	0.281 (7.14)	THRU
	M2 (Square)	20.0 (9.1)	9.63 (244.6)	11.64 (295.7)	12.77 (324.4)	4.00 (101.6)	1.90 (48.3)	0.6250 (15.880)	.188 SQ. X 1.50	.507-.517	5.741 (145.82)	3.000 (76.20)	0.10 (2.5)	5.00 (127.0)	0.44 (11.2)	0.281 (7.14)	THRU
	M3 (Square)	20.0 (9.1)	9.63 (244.6)	11.64 (295.7)	12.77 (324.4)	4.00 (101.6)	1.90 (48.3)	0.6250 (15.880)	.188 SQ. X 1.50	.507-.517	5.875 (149.23)	4.500 (114.30)	0.10 (2.5)	5.00 (127.0)	0.44 (11.2)	-	3/8-16 THRU
	NEMA 42	20.0 (9.1)	9.63 (244.6)	11.64 (295.7)	12.77 (324.4)	4.00 (101.6)	1.32 (33.5)	0.6250 (15.880)	.188 SQ. X 1.50	.507-.517	4.950 (125.73)	2.187 (55.55)	0.06 (1.5)	4.25 (108.0)	0.44 (11.2)	0.281 (7.14)	THRU
	NEMA 56C	20.0 (9.1)	9.63 (244.6)	11.64 (295.7)	12.77 (324.4)	4.00 (101.6)	2.06 (52.3)	0.6250 (15.880)	.188 SQ. X 1.50	.507-.517	5.875 (149.23)	4.500 (114.30)	0.09 (2.3)	6.50 (165.1)	0.44 (11.2)	-	3/8-16 THRU

Dimensions are in **inches** (mm)

C1 = BARE MOTOR, C2 = MOTOR WITH TACHOMETER OR ENCODER, C3 = MOTOR WITH TACHOMETER AND ENCODER

GLENTEK GM4060 DC BRUSH SERVO MOTOR DIMENSIONS

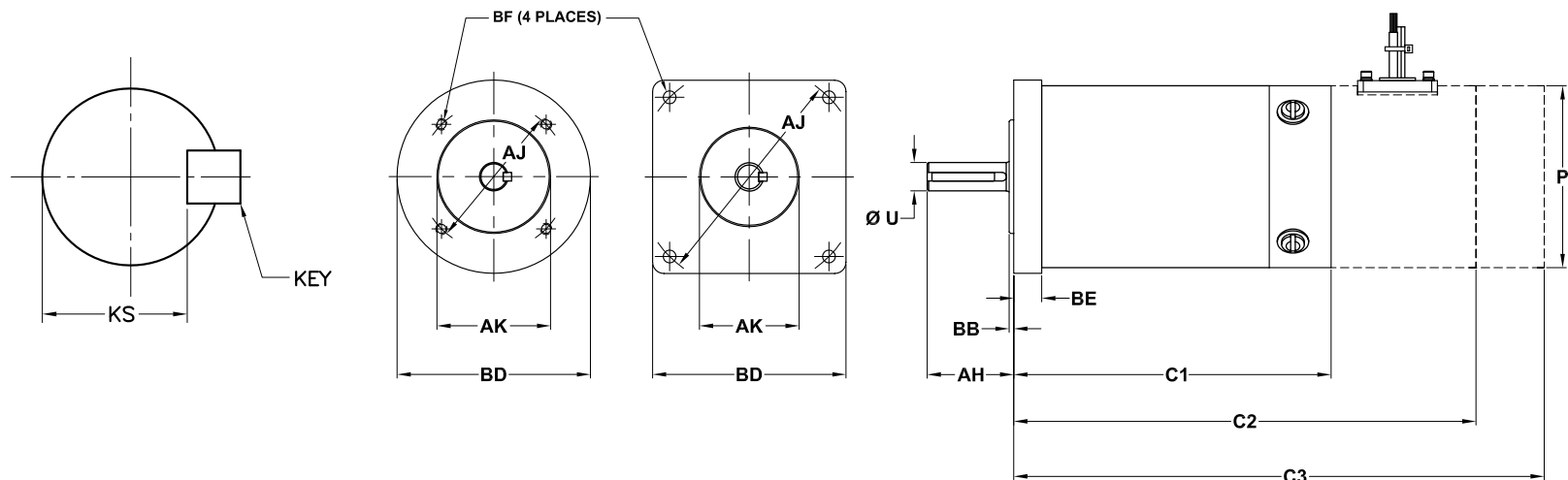


Model Number	Flange Type	Lbs (Kg)	C1	C2	C3	P (max)	Shaft				Flange/Face				Mounting Hole		
							AH	U (max)	KEY	KS	AJ	AK	BB	BD	BE (max)	BF Dia.	Tap
GM4060	Round	23.0 (10.5)	10.4 (264.2)	12.41 (315.2)	13.54 (343.9)	4.00 (101.6)	1.90 (48.3)	0.6250 (15.880)	.188 SQ. X 1.50	.507-.517	3.250 (82.55)	2.498 (63.45)	0.10 (2.5)	4.00 (101.6)	0.62 (15.7)	-	1/4-20 X .50
	M1 (Square)	23.0 (10.5)	10.4 (264.2)	12.41 (315.2)	13.54 (343.9)	4.00 (101.6)	1.90 (48.3)	0.6250 (15.880)	.188 SQ. X 1.50	.507-.517	4.950 (125.73)	2.187 (55.55)	0.06 (1.5)	4.25 (108.0)	0.44 (11.2)	0.281 (7.14)	THRU
	M2 (Square)	23.0 (10.5)	10.4 (264.2)	12.41 (315.2)	13.54 (343.9)	4.00 (101.6)	1.90 (48.3)	0.6250 (15.880)	.188 SQ. X 1.50	.507-.517	5.741 (145.82)	3.000 (76.20)	0.10 (2.5)	5.00 (127.0)	0.44 (11.2)	0.281 (7.14)	THRU
	M3 (Square)	23.0 (10.5)	10.4 (264.2)	12.41 (315.2)	13.54 (343.9)	4.00 (101.6)	1.90 (48.3)	0.6250 (15.880)	.188 SQ. X 1.50	.507-.517	5.875 (149.23)	4.500 (114.30)	0.10 (2.5)	5.00 (127.0)	0.44 (11.2)	-	3/8-16 THRU
	NEMA 42	23.0 (10.5)	10.4 (264.2)	12.41 (315.2)	13.54 (343.9)	4.00 (101.6)	1.32 (33.5)	0.6250 (15.880)	.188 SQ. X 1.50	.507-.517	4.950 (125.73)	2.187 (55.55)	0.06 (1.5)	4.25 (108.0)	0.44 (11.2)	0.281 (7.14)	THRU
	NEMA 56C	23.0 (10.5)	10.4 (264.2)	12.41 (315.2)	13.54 (343.9)	4.00 (101.6)	2.06 (52.3)	0.6250 (15.880)	.188 SQ. X 1.50	.507-.517	5.875 (149.23)	4.500 (114.30)	0.09 (2.3)	6.50 (165.1)	0.44 (11.2)	-	3/8-16 THRU

Dimensions are in **inches** (mm)

C1 = BARE MOTOR, C2 = MOTOR WITH TACHOMETER OR ENCODER, C3 = MOTOR WITH TACHOMETER AND ENCODER

GLENTEK GMR4910 DC BRUSH SERVO MOTOR DIMENSIONS

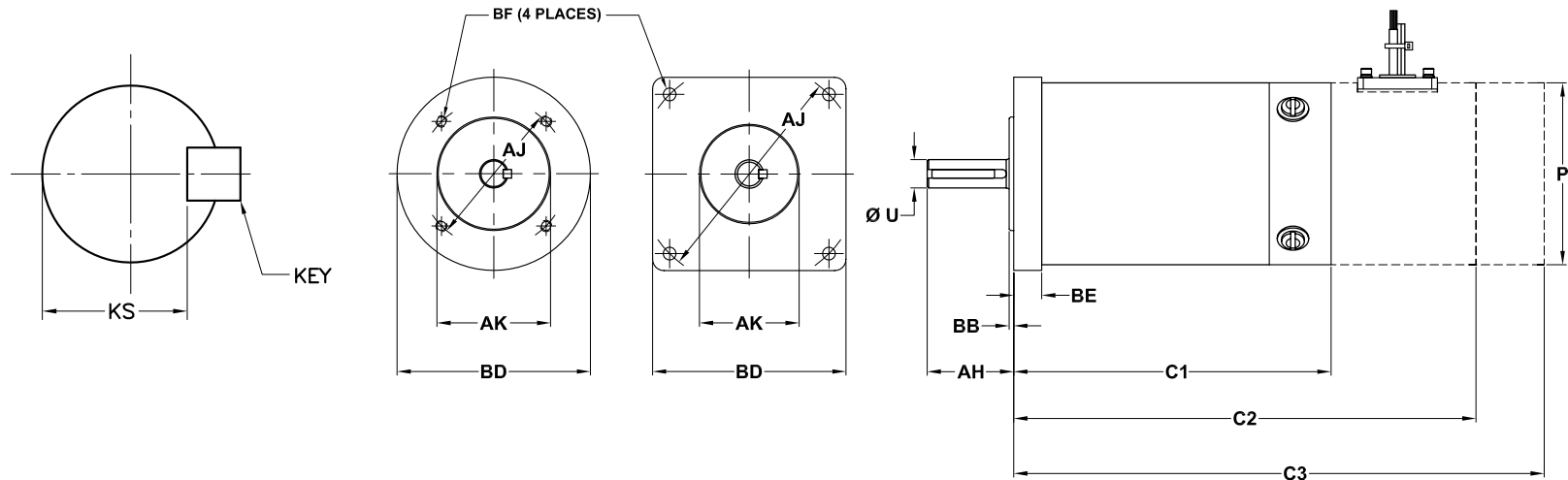


Model Number	Flange Type	Lbs (Kg)	C1	C2	C3	P (max)	Shaft				Flange/Face				Mounting Hole		
							AH	U (max)	KEY	KS	AJ	AK	BB	BD	BE (max)	BF Dia.	Tap
GMR4910	Round	18.0 (8.2)	8.1 (205.7)	8.1 (205.7)	11.28 (286.5)	4.90 (124.5)	1.90 (48.3)	0.6250 (15.880)	.188 SQ. X 1.50	.507-.517	3.250 (82.55)	2.498 (63.45)	0.10 (2.5)	4.00 (101.6)	0.62 (15.7)	-	1/4-20 X .50
	M1 (Square)	18.0 (8.2)	8.1 (205.7)	8.1 (205.7)	11.28 (286.5)	4.90 (124.5)	1.90 (48.3)	0.6250 (15.880)	.188 SQ. X 1.50	.507-.517	4.950 (125.73)	2.187 (55.55)	0.06 (1.5)	4.25 (108.0)	0.44 (11.2)	0.281 (7.14)	THRU
	M2 (Square)	18.0 (8.2)	8.1 (205.7)	8.1 (205.7)	11.28 (286.5)	4.90 (124.5)	1.90 (48.3)	0.6250 (15.880)	.188 SQ. X 1.50	.507-.517	5.741 (145.82)	3.000 (76.20)	0.10 (2.5)	5.00 (127.0)	0.44 (11.2)	0.281 (7.14)	THRU
	M3 (Square)	18.0 (8.2)	8.1 (205.7)	8.1 (205.7)	11.28 (286.5)	4.90 (124.5)	1.90 (48.3)	0.6250 (15.880)	.188 SQ. X 1.50	.507-.517	5.875 (149.23)	4.500 (114.30)	0.10 (2.5)	5.00 (127.0)	0.44 (11.2)	-	3/8-16 THRU
	NEMA 42	18.0 (8.2)	8.1 (205.7)	8.1 (205.7)	11.28 (286.5)	4.00 (101.6)	1.32 (33.5)	0.6250 (15.880)	.188 SQ. X 1.50	.507-.517	4.950 (125.73)	2.187 (55.55)	0.06 (1.5)	4.25 (108.0)	0.44 (11.2)	0.281 (7.14)	THRU
	NEMA 56C	18.0 (8.2)	8.1 (205.7)	8.1 (205.7)	11.28 (286.5)	4.90 (124.5)	2.06 (52.3)	0.6250 (15.880)	.188 SQ. X 1.50	.507-.517	5.875 (149.23)	4.500 (114.30)	0.09 (2.3)	6.50 (165.1)	0.44 (11.2)	-	3/8-16 THRU

Dimensions are in **inches** (mm)

C1 = BARE MOTOR, C2 = MOTOR WITH TACHOMETER OR ENCODER, C3 = MOTOR WITH TACHOMETER AND ENCODER

GLENTEK GM4920 DC BRUSH SERVO MOTOR DIMENSIONS

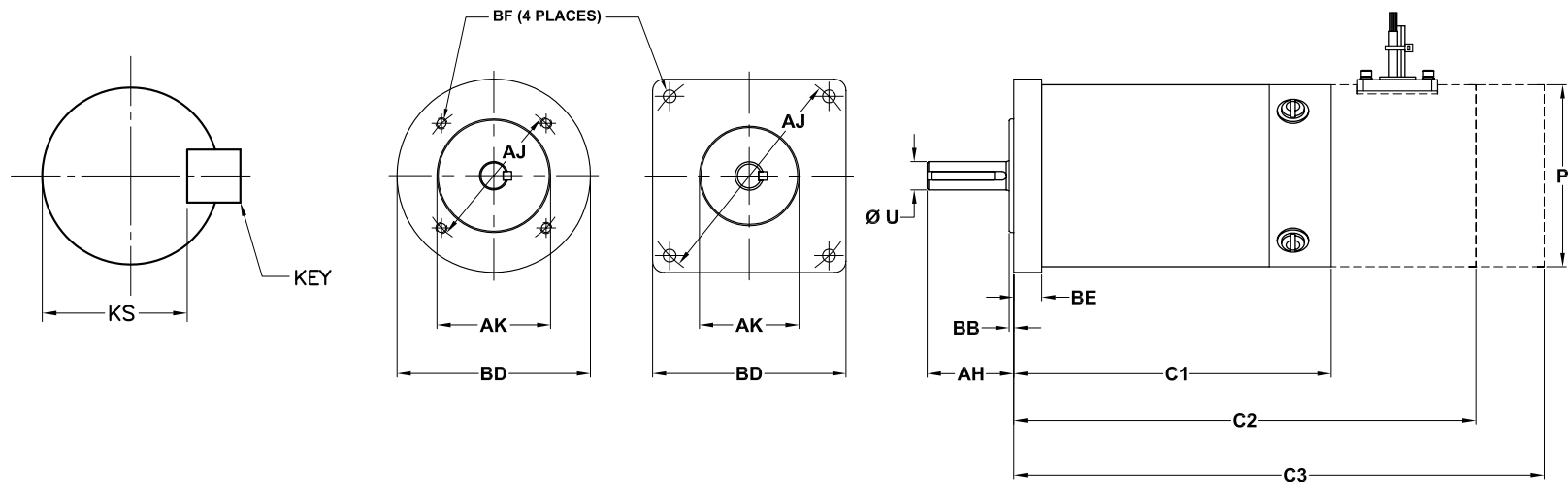


Model Number	Flange Type	Lbs (Kg)	C1	C2	C3	P (max)	Shaft				Flange/Face				Mounting Hole		
							AH	U (max)	KEY	KS	AJ	AK	BB	BD	BE (max)	BF Dia.	Tap
GMR4920	Round	23.0 (10.5)	9.2 (233.7)	9.2 (233.7)	12.38 (314.5)	4.9 (124.5)	1.90 (48.3)	0.6250 (15.880)	.188 SQ. X 1.50	.507-.517	3.250 (82.55)	2.498 (63.45)	0.10 (2.5)	4.00 (101.6)	0.62 (15.7)	-	1/4-20 X .50
	M1 (Square)	23.0 (10.5)	9.2 (233.7)	9.2 (233.7)	12.38 (314.5)	4.9 (124.5)	1.90 (48.3)	0.6250 (15.880)	.188 SQ. X 1.50	.507-.517	4.950 (125.73)	2.187 (55.55)	0.06 (1.5)	4.25 (108.0)	0.44 (11.2)	0.281 (7.14)	THRU
	M2 (Square)	23.0 (10.5)	9.2 (233.7)	9.2 (233.7)	12.38 (314.5)	4.9 (124.5)	1.90 (48.3)	0.6250 (15.880)	.188 SQ. X 1.50	.507-.517	5.741 (145.82)	3.000 (76.20)	0.10 (2.5)	5.00 (127.0)	0.44 (11.2)	0.281 (7.14)	THRU
	M3 (Square)	23.0 (10.5)	9.2 (233.7)	9.2 (233.7)	12.38 (314.5)	4.9 (124.5)	1.90 (48.3)	0.6250 (15.880)	.188 SQ. X 1.50	.507-.517	5.875 (149.23)	4.500 (114.30)	0.10 (2.5)	5.00 (127.0)	0.44 (11.2)	-	3/8-16 THRU
	NEMA 42	23.0 (10.5)	9.2 (233.7)	9.2 (233.7)	12.38 (314.5)	4 (101.6)	1.32 (33.5)	0.6250 (15.880)	.188 SQ. X 1.50	.507-.517	4.950 (125.73)	2.187 (55.55)	0.06 (1.5)	4.25 (108.0)	0.44 (11.2)	0.281 (7.14)	THRU
	NEMA 56C	23.0 (10.5)	9.2 (233.7)	9.2 (233.7)	12.38 (314.5)	4.9 (124.5)	2.06 (52.3)	0.6250 (15.880)	.188 SQ. X 1.50	.507-.517	5.875 (149.23)	4.500 (114.30)	0.09 (2.3)	6.50 (165.1)	0.44 (11.2)	-	3/8-16 THRU

Dimensions are in **inches** (mm)

C1 = BARE MOTOR, C2 = MOTOR WITH TACHOMETER OR ENCODER, C3 = MOTOR WITH TACHOMETER AND ENCODER

GLENTEK GMR4940 DC BRUSH SERVO MOTOR DIMENSIONS

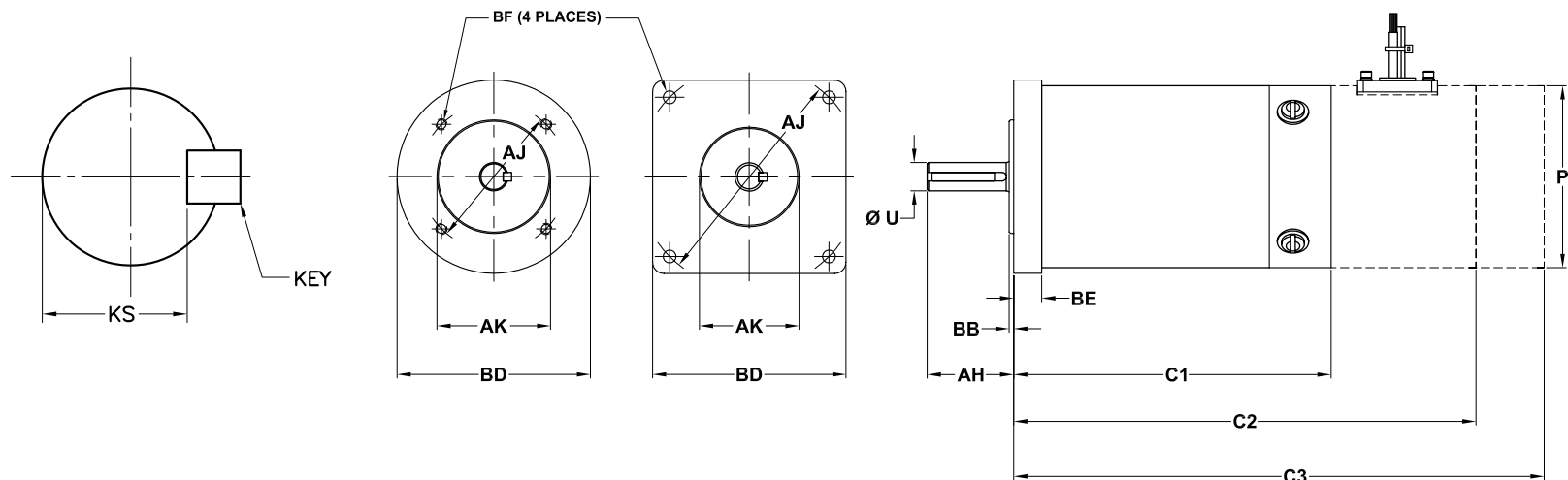


Model Number	Flange Type	Lbs (Kg)	C1	C2	C3	P (max)	Shaft				Flange/Face				Mounting Hole		
							AH	U (max)	KEY	KS	AJ	AK	BB	BD	BE (max)	BF Dia.	Tap
GMR4940	Round	28.0 (12.7)	11.6 (294.6)	11.6 (294.6)	14.78 (375.4)	4.9 (124.5)	1.90 (48.3)	0.6250 (15.880)	.188 SQ. X 1.50	.507-.517	3.250 (82.55)	2.498 (63.45)	0.10 (2.5)	4.00 (101.6)	0.62 (15.7)	-	1/4-20 X .50
	M1 (Square)	28.0 (12.7)	11.6 (294.6)	11.6 (294.6)	14.78 (375.4)	4.9 (124.5)	1.90 (48.3)	0.6250 (15.880)	.188 SQ. X 1.50	.507-.517	4.950 (125.73)	2.187 (55.55)	0.06 (1.5)	4.25 (108.0)	0.44 (11.2)	0.281 (7.14)	THRU
	M2 (Square)	28.0 (12.7)	11.6 (294.6)	11.6 (294.6)	14.78 (375.4)	4.9 (124.5)	1.90 (48.3)	0.6250 (15.880)	.188 SQ. X 1.50	.507-.517	5.741 (145.82)	3.000 (76.20)	0.10 (2.5)	5.00 (127.0)	0.44 (11.2)	0.281 (7.14)	THRU
	M3 (Square)	28.0 (12.7)	11.6 (294.6)	11.6 (294.6)	14.78 (375.4)	4.9 (124.5)	1.90 (48.3)	0.6250 (15.880)	.188 SQ. X 1.50	.507-.517	5.875 (149.23)	4.500 (114.30)	0.10 (2.5)	5.00 (127.0)	0.44 (11.2)	-	3/8-16 THRU
	NEMA 42	28.0 (12.7)	11.6 (294.6)	11.6 (294.6)	14.78 (375.4)	4 (101.6)	1.32 (33.5)	0.6250 (15.880)	.188 SQ. X 1.50	.507-.517	4.950 (125.73)	2.187 (55.55)	0.06 (1.5)	4.25 (108.0)	0.44 (11.2)	0.281 (7.14)	THRU
	NEMA 56C	28.0 (12.7)	11.6 (294.6)	11.6 (294.6)	14.78 (375.4)	4.9 (124.5)	2.06 (52.3)	0.6250 (15.880)	.188 SQ. X 1.50	.507-.517	5.875 (149.23)	4.500 (114.30)	0.09 (2.3)	6.50 (165.1)	0.44 (11.2)	-	3/8-16 THRU

Dimensions are in **inches** (mm)

C1 = BARE MOTOR, C2 = MOTOR WITH TACHOMETER OR ENCODER, C3 = MOTOR WITH TACHOMETER AND ENCODER

GLENTEK GMR4950 DC BRUSH SERVO MOTOR DIMENSIONS

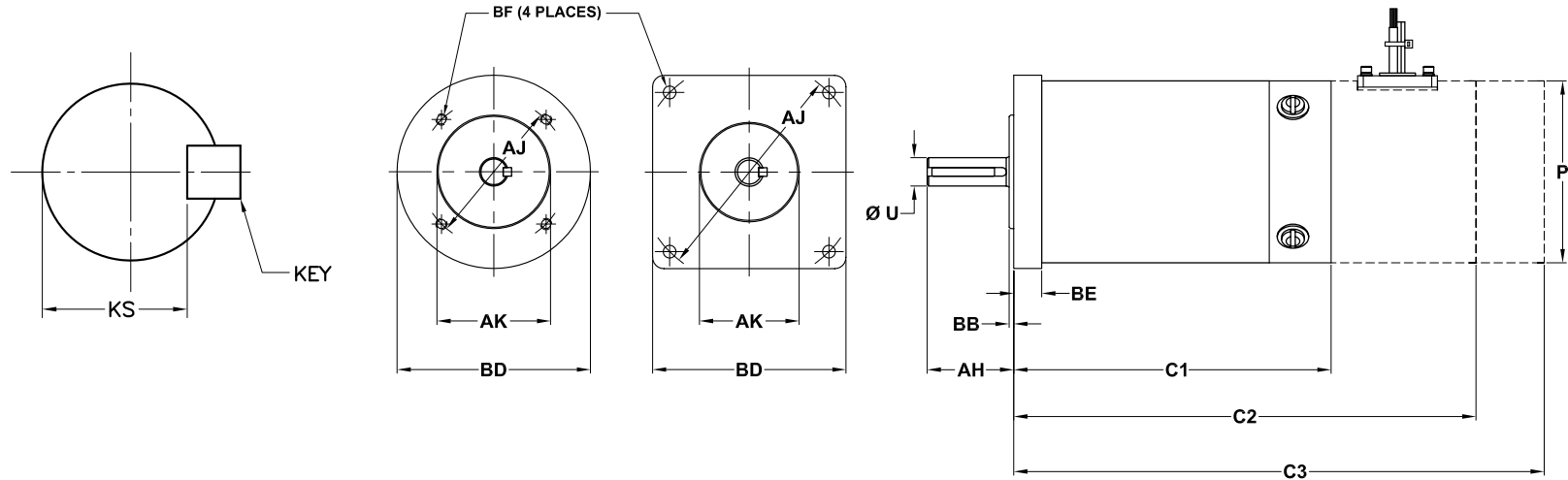


Model Number	Flange Type	Lbs (Kg)	C1	C2	C3	P (max)	Shaft				Flange/Face				Mounting Hole		
							AH	U (max)	KEY	KS	AJ	AK	BB	BD	BE (max)	BF Dia.	Tap
GMR4950	Round	32.0 (14.5)	12.6 (320.0)	12.6 (320.0)	15.78 (400.8)	4.9 (124.5)	1.90 (48.3)	0.6250 (15.880)	.188 SQ. X 1.50	.507-.517	3.250 (82.55)	2.498 (63.45)	0.10 (2.5)	4.00 (101.6)	0.62 (15.7)	-	1/4-20 X .50
	M1 (Square)	32.0 (14.5)	12.6 (320.0)	12.6 (320.0)	15.78 (400.8)	4.9 (124.5)	1.90 (48.3)	0.6250 (15.880)	.188 SQ. X 1.50	.507-.517	4.950 (125.73)	2.187 (55.55)	0.06 (1.5)	4.25 (108.0)	0.44 (11.2)	0.281 (7.14)	THRU
	M2 (Square)	32.0 (14.5)	12.6 (320.0)	12.6 (320.0)	15.78 (400.8)	4.9 (124.5)	1.90 (48.3)	0.6250 (15.880)	.188 SQ. X 1.50	.507-.517	5.741 (145.82)	3.000 (76.20)	0.10 (2.5)	5.00 (127.0)	0.44 (11.2)	0.281 (7.14)	THRU
	M3 (Square)	32.0 (14.5)	12.6 (320.0)	12.6 (320.0)	15.78 (400.8)	4.9 (124.5)	1.90 (48.3)	0.6250 (15.880)	.188 SQ. X 1.50	.507-.517	5.875 (149.23)	4.500 (114.30)	0.10 (2.5)	5.00 (127.0)	0.44 (11.2)	-	3/8-16 THRU
	NEMA 42	32.0 (14.5)	12.6 (320.0)	12.6 (320.0)	15.78 (400.8)	4 (101.6)	1.32 (33.5)	0.6250 (15.880)	.188 SQ. X 1.50	.507-.517	4.950 (125.73)	2.187 (55.55)	0.06 (1.5)	4.25 (108.0)	0.44 (11.2)	0.281 (7.14)	THRU
	NEMA 56C	32.0 (14.5)	12.6 (320.0)	12.6 (320.0)	15.78 (400.8)	4.9 (124.5)	2.06 (52.3)	0.6250 (15.880)	.188 SQ. X 1.50	.507-.517	5.875 (149.23)	4.500 (114.30)	0.09 (2.3)	6.50 (165.1)	0.44 (11.2)	-	3/8-16 THRU

Dimensions are in **inches** (mm)

C1 = BARE MOTOR, C2 = MOTOR WITH TACHOMETER OR ENCODER, C3 = MOTOR WITH TACHOMETER AND ENCODER

GLENTEK GM6060 & GM6090 DC BRUSH SERVO MOTOR DIMENSIONS



Model Number	Flange Type	Lbs (Kg)	C1	C2	C3	P (max)	Shaft				Flange/Face				Mounting Hole		
							AH	U (max)	KEY	KS	AJ	AK	BB	BD	BE (max)	BF Dia.	Tap
GM6060	Round	41.0 (18.6)	13.92 (353.6)	13.92 (353.6)	17.1 (434.3)	5.65 (143.5)	1.70 (43.2)	0.8750 (22.230)	.188 SQ. X 1.50	.761-.771 (95.25)	3.750 (95.25)	3.000 (76.20)	0.09 (2.3)	5.12 (130.1)	0.44 (11.2)	-	3/8-16 X .50
	Square	41.0 (18.6)	13.92 (353.6)	13.92 (353.6)	17.1 (434.3)	5.65 (143.5)	1.70 (43.2)	0.8750 (22.230)	.188 SQ. X 1.50	.761-.771 (95.25)	5.875 (149.23)	3.000 (76.20)	0.09 (2.3)	5.17 (131.3)	0.44 (11.2)	0.406 (10.31)	THRU
	NEMA 56C	41.0 (18.6)	13.92 (353.6)	13.92 (353.6)	17.1 (434.3)	5.65 (143.5)	2.06 (52.3)	0.6250 (15.880)	.188 SQ. X 1.50	.507-.517 (12.92)	5.875 (149.23)	4.500 (114.30)	0.09 (2.3)	6.50 (165.1)	0.44 (11.2)	-	3/8-16 THRU
GM6090	Round	56.0 (25.5)	16.92 (429.8)	16.92 (429.8)	20.1 (510.5)	5.65 (143.5)	1.70 (43.2)	0.8750 (22.230)	.188 SQ. X 1.50	.761-.771 (95.25)	3.750 (95.25)	3.000 (76.20)	0.09 (2.3)	5.12 (130.1)	0.44 (11.2)	-	3/8-16 X .50
	Square	56.0 (25.5)	16.92 (429.8)	16.92 (429.8)	20.1 (510.5)	5.65 (143.5)	1.70 (43.2)	0.8750 (22.230)	.188 SQ. X 1.50	.761-.771 (95.25)	5.875 (149.23)	3.000 (76.20)	0.09 (2.3)	5.17 (131.3)	0.44 (11.2)	0.406 (10.31)	THRU
	NEMA 56C	56.0 (25.5)	16.92 (429.8)	16.92 (429.8)	20.1 (510.5)	5.65 (143.5)	2.06 (52.3)	0.6250 (15.880)	.188 SQ. X 1.50	.507-.517 (12.92)	5.875 (149.23)	4.500 (114.30)	0.09 (2.3)	6.50 (165.1)	0.44 (11.2)	-	3/8-16 THRU

Dimensions are in **inches** (mm)

C1 = BARE MOTOR, C2 = MOTOR WITH TACHOMETER OR ENCODER, C3 = MOTOR WITH TACHOMETER AND ENCODER