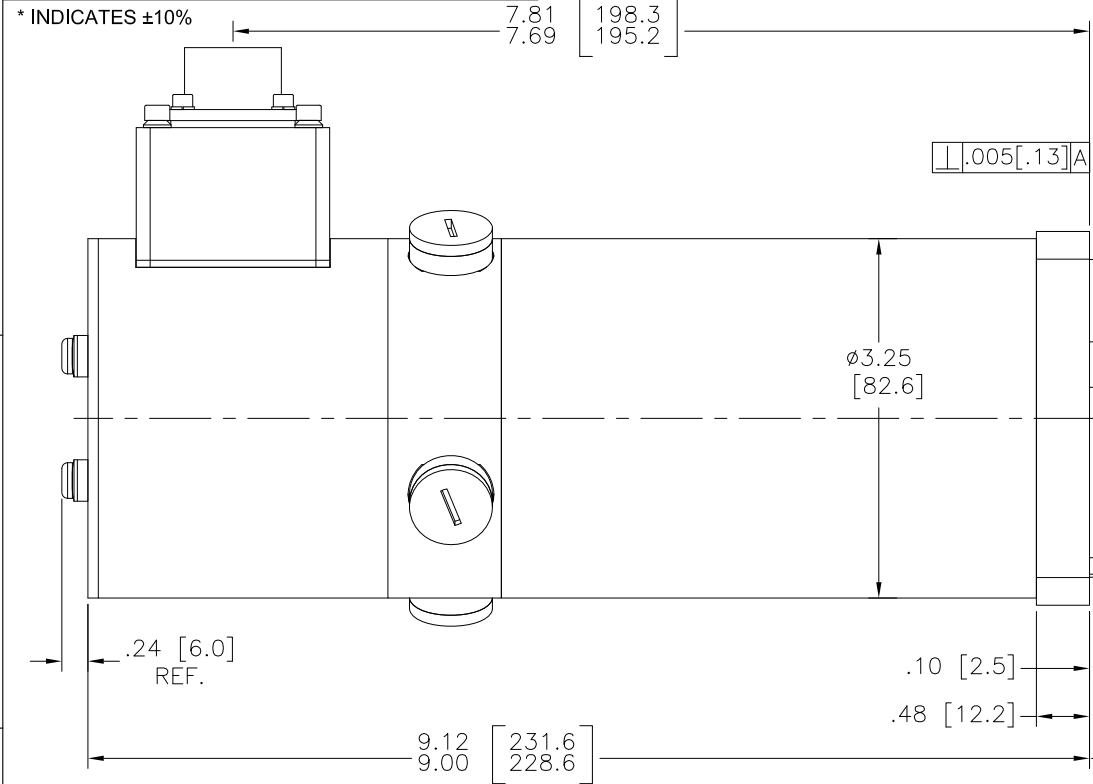


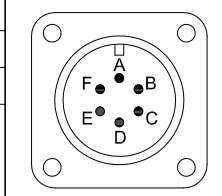
MOTOR MODEL NO.: <b>GM3340-30</b>		
CONFIG. CODE: <b>GM3340-30-02008310-360A</b>		
MOTOR CONSTANTS	UNITS	VALUE
CONTINUOUS STALL TORQUE	IN-LB	<b>10.6</b>
PEAK TORQUE	IN-LB	<b>53.0</b>
TORQUE CONSTANT (K <sub>T</sub> )	IN-LB/AMPS	<b>2.53</b>
R <sub>A</sub> *	OHMS	<b>2.0</b>
INDUCTANCE (L <sub>A</sub> )*	MHY	<b>2.7</b>
BEMF *	VOLTS/1000 RPM	<b>30</b>
MAXIMUM SPEED	RPM	<b>3200</b>
INERTIA (J <sub>A</sub> )	IN-LB-SEC <sup>2</sup>	<b>0.00310</b>
TACHOMETER OUTPUT	VOLTS/1000 RPM	<b>7</b>
TACHOMETER RIPPLE	PERCENT	<b>1</b>
WEIGHT	LB/KG	<b>-</b>

\* INDICATES ±10%



- WITH A POSITIVE VOLTAGE APPLIED TO PIN "A" (RED MOTOR LEAD) WITH RESPECT TO PIN "B" (BLACK MOTOR LEAD), THE MOTOR DRIVE SHAFT WILL TURN IN THE "CCW" DIRECTION AS VIEWED FROM THE SHAFT END.
- INCHES [MILLIMETERS].
- MOTOR FINISH: BLACK.
- SHAFT SEAL NOT INSTALLED.

NOTES: UNLESS OTHERWISE SPECIFIED.



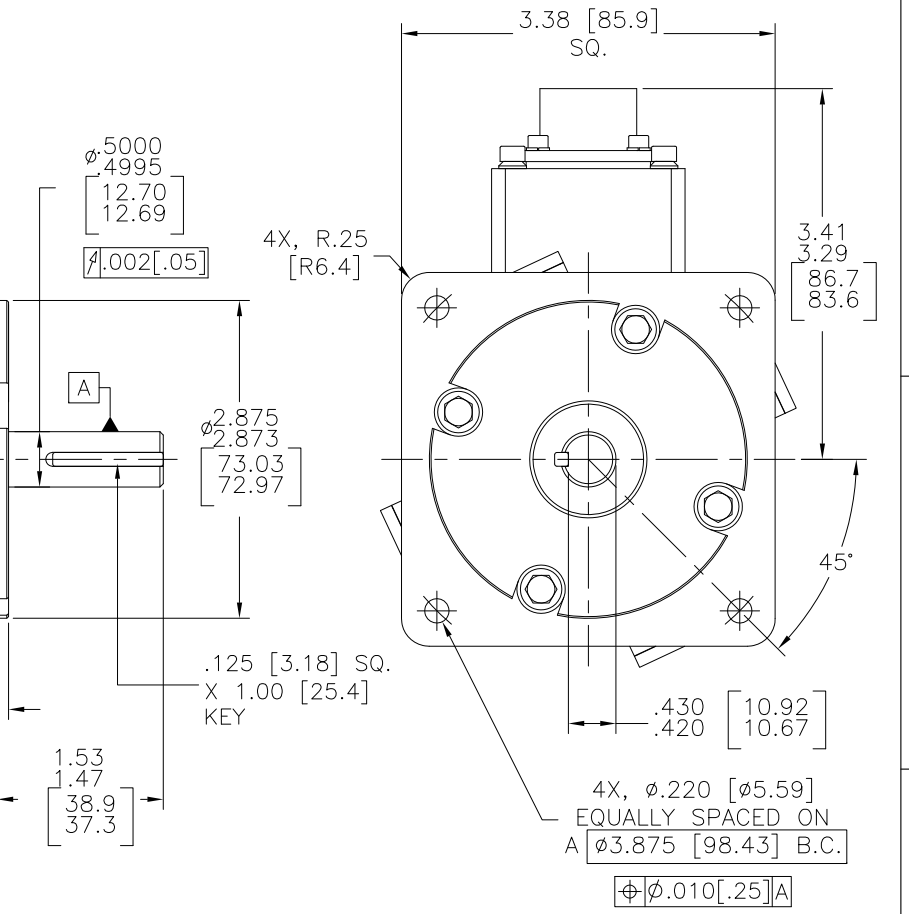
**97-3102A-14S-6P(946)**

PIN	FUNCTION
A	MOTOR + (C.C.W.)
B	MOTOR - (C.C.W.)
C	TACH. - (C.C.W.)
D	TACH. + (C.C.W.)
E	TACH. SHIELD
F	N/C

\*\* CONNECTOR INDEX FACING AWAY FROM SHAFT END.

REVISION HISTORY						
ZONE	REV	DESCRIPTION	ECO	DATE	CHANGED	APPD
-	A	INITIAL DRAWING RELEASE	-	4DEC20	K. HALE	R.D.M.

DC TACHOMETER'S DATA CHART	
SENSITIVITY	7.0 V/1000 RPM ±10% 0.067 V/RAD/SEC ±10%
RIPPLE VOLTAGE	1% AVERAGE TO PK
DC RESISTANCE	70 OHMS ±12.5%
INDUCTANCE	12
MIN. LOAD RESISTANCE	7000 OHMS
MAX. OPERATING SPEED	5000 RPM



UNLESS OTHERWISE SPECIFIED DIMENSIONS ARE IN INCHES	APPROVAL	DATE
TOLERANCES ARE AS FOLLOWS: DECIMAL: .XX = ±0.01 .XXX = ±0.005 ANGULAR: < = ±0.5°	DWN BY: K. HALE	4DEC20
FINISH: 125 ✓ MAXIMUM	CHK BY: R.D.M.	4DEC20
	APP BY: R.D.M.	4DEC20

**GLENTAK**  
"Solutions for Motion Control"

208 Standard Street  
El Segundo, CA 90245 USA  
310.322.3026 FAX 310.322.7709  
www.glentek.com

DRAWING TITLE  
**INSTALLATION DRAWING**

SIZE C	MODEL GM3340-30	DRAWING NUMBER 30186-1	REV A
-----------	--------------------	---------------------------	----------

SCALE: 1:125:1 FILE NAME: 30186-1RA.DWG SHEET 1 OF 1  
CONFIGURATION CODE: GM3340-30-0200810-360A

THE INFORMATION CONTAINED WITHIN THIS DOCUMENT WAS ORIGINATED BY AND IS THE EXCLUSIVE PROPERTY OF GLENTAK INC. THIS PROPRIETARY INFORMATION SHALL NOT BE REPRODUCED, TRANSFERRED TO OTHER DOCUMENTS, DISCLOSED TO OTHERS, USED FOR MANUFACTURING OR ANY OTHER PURPOSE WITHOUT PRIOR WRITTEN PERMISSION FROM GLENTAK, INC.