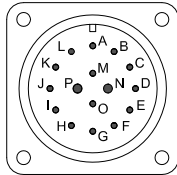


| | | |
|--|------------------------|----------------|
| MOTOR MODEL NO.: GM4040-41 | | |
| CONFIG. CODE: GM4040-41-10409511-344A | | |
| MOTOR CONSTANTS | UNITS | VALUE |
| CONTINUOUS STALL TORQUE | IN-LB | 31.3 |
| PEAK TORQUE | IN-LB | 156.5 |
| TORQUE CONSTANT (K _T) | IN-LB/AMPS | 3.44 |
| R _A * | OHMS | 0.8 |
| INDUCTANCE (L _A)* | MHY | 5.60 |
| BEMF * | VOLTS/1000 RPM | 41 |
| MAXIMUM SPEED | RPM | 3500 |
| INERTIA (J _A) | IN-LB-SEC ² | 0.01630 |
| TACHOMETER OUTPUT | VOLTS/1000 RPM | N/A |
| TACHOMETER RIPPLE | PERCENT | N/A |
| WEIGHT | LB/KG | - |



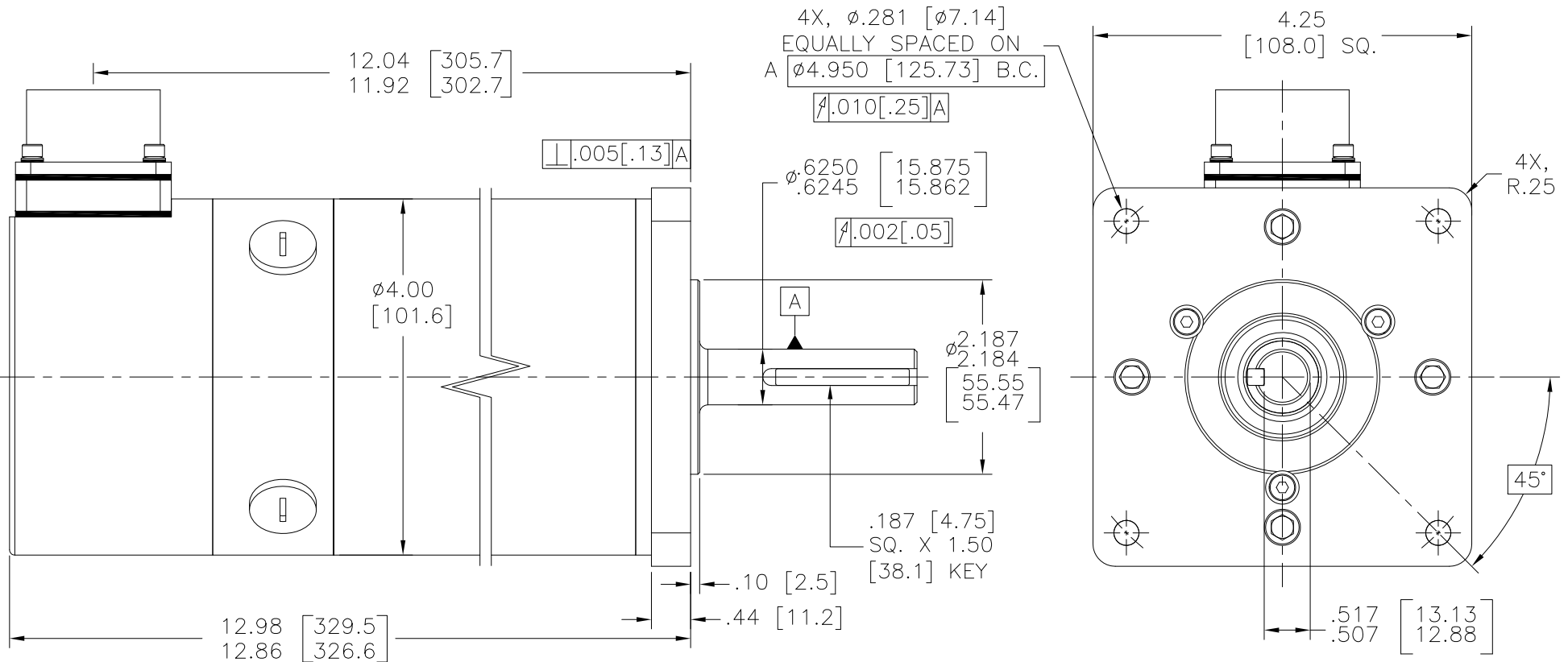
ACC02E24-7P-025

| PIN | FUNCTION | PIN | FUNCTION |
|-----|-------------|-----|------------------|
| A | CHANNEL A+ | I | ENCODER COMMON |
| B | CHANNEL A- | J | BRAKE - |
| C | CHANNEL B- | K | ENCODER SHIELD |
| D | CHANNEL B+ | L | N/C |
| E | CHANNEL Z+ | M | N/C |
| F | CHANNEL Z- | N | MOTOR C.C.W. (-) |
| G | BRAKE + | O | N/C |
| H | ENCODER +5V | P | MOTOR C.C.W. (+) |

| REVISION HISTORY | | | | | | |
|------------------|-----|-------------------------|------|--------|---------|--------|
| ZONE | REV | DESCRIPTION | ECO | DATE | CHANGED | APPD |
| - | A | INITIAL DRAWING RELEASE | 5380 | 2DEC20 | K. HALE | R.D.M. |

| ENCODER'S DATA CHART | |
|---------------------------|--|
| LINE COUNT | 1000 PPR |
| FREQUENCY RESPONSE | 200 kHz MAX. (UP TO 85 °C) 100 kHz MAX. (UP TO 100 °C) |
| RISE AND FALL TIME | 100 nSEC. MAX. |
| FRICTION TORQUE | 5.9 X 10 ⁻³ N • m MAX. (60 g • cm MAX.) |
| ROTOR MOMENT OF INERTIA | 1 X 10 ⁻⁶ kg • m ² MAX. (10 g • cm ² MAX.) |
| MAX. SPEED | 100 S ⁻¹ (6000 RPM) |
| OPERATING TEMP. RANGE | -20 °C ~ +100 °C |
| STORAGE TEMP. RANGE | -25 °C ~ +100 °C |
| VIBRATION (TEST ARTICLES) | 49 m/S ² (5 G) 10 ~ 500 Hz. |
| SHOCK (TEST ARTICLES) | 490 m/S ² (50 G) 11 mSEC. |

* INDICATES ±10%



4. SHAFT SEAL INSTALLED.

3. MOTOR FINISH: BLACK.

2. INCHES [MILLIMETERS].

1. WITH A POSITIVE VOLTAGE APPLIED TO PIN # "P" (RED MOTOR LEAD) WITH RESPECT TO PIN # "N" (BLACK MOTOR LEAD), THE MOTOR DRIVE SHAFT WILL TURN IN THE "CCW" (COUNTER CLOCKWISE) DIRECTION AS VIEWED FROM THE SHAFT END.

NOTE: UNLESS OTHERWISE SPECIFIED.

| | | |
|--|--------------------|--------|
| UNLESS OTHERWISE SPECIFIED DIMENSIONS ARE IN INCHES | APPROVAL | DATE |
| TOLERANCES ARE AS FOLLOWS: DECIMAL: .XX = ±0.01 XXX = ±0.005 ANGULAR: < = ±0.5° | DWN BY: K. HALE | 2DEC20 |
| FINISH: 125 ✓ MAXIMUM | CHK BY: R.D.M. | 2DEC20 |
| | APP BY: R.D.M. | 2DEC20 |

THE INFORMATION CONTAINED WITHIN THIS DOCUMENT WAS ORIGINATED BY AND IS THE EXCLUSIVE PROPERTY OF GLENTEK INC. THIS PROPRIETARY INFORMATION SHALL NOT BE REPRODUCED, TRANSFERRED TO OTHER DOCUMENTS, DISCLOSED TO OTHERS, USED FOR MANUFACTURING OR ANY OTHER PURPOSE WITHOUT PRIOR WRITTEN PERMISSION FROM GLENTEK, INC.

GLENTEK
"Solutions for Motion Control"
208 Standard Street
El Segundo, CA 90245 USA
310.322.3026 FAX 310.322.7709
www.glenetek.com

DRAWING TITLE
INSTALLATION DRAWING

| | | | |
|----------------|--------------------------|---------------------------|----------|
| SIZE C | MODEL GM4040-41 | DRAWING NUMBER 30275-1 | REV A |
| SCALE: 1:125:1 | FILE NAME: 30275-1RA.DWG | SHEET 1 OF 1 | |

CONFIGURATION CODE: GM4040-41-10409511-344A