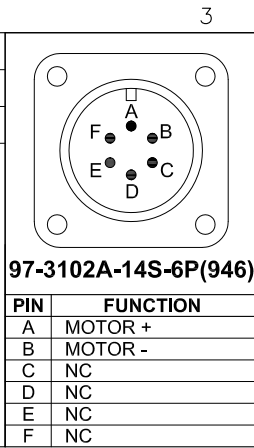


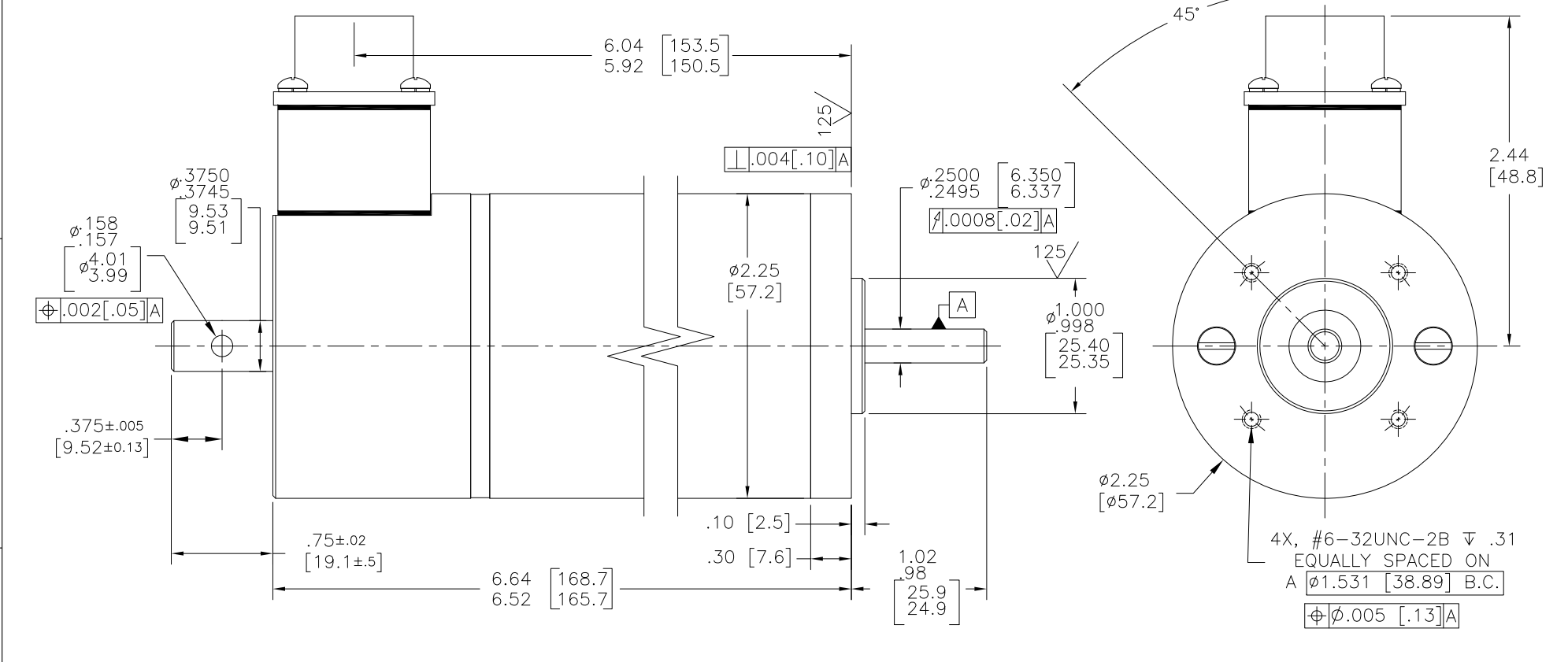
MOTOR MODEL NO.: GM2340-11		
CONFIG. CODE: GM2340-11-00006310-370A		
MOTOR CONSTANTS	UNITS	VALUE
CONTINUOUS STALL TORQUE	IN-LB	3.1
PEAK TORQUE	IN-LB	15.5
TORQUE CONSTANT (K _T)	IN-LB/AMPS	.94
R _A *	OHMS	1.0
INDUCTANCE (L _A)*	MHY	2.70
BEMF *	VOLTS/1000 RPM	11
MAXIMUM SPEED	RPM	4000
INERTIA (J _A)	IN-LB-SEC ²	0.0004
TACHOMETER OUTPUT	VOLTS/1000 RPM	-
TACHOMETER RIPPLE	PERCENT	-
WEIGHT	LB/KG	-



** CONNECTOR INDEX
FACING AWAY FROM
SHAFT END.

REVISION HISTORY						
ZONE	REV	DESCRIPTION	ECO	DATE	CHANGED	APPD
-	A	INITIAL DRAWING RELEASE	5382	3DEC20	M. TAGUPA	R.D.M.

* INDICATES ±10%



4. SHAFT SEAL NOT INSTALLED.
 3. MOTOR FINISH: BLACK.
 2. INCHES [MILLIMETERS].
 1. WITH A POSITIVE VOLTAGE APPLIED TO PIN "A" (RED MOTOR LEAD) WITH RESPECT TO PIN "B" (BLACK MOTOR LEAD) THE MOTOR DRIVE SHAFT WILL TURN IN THE "CW" DIRECTION AS VIEWED FROM THE SHAFT END.
- NOTES: UNLESS OTHERWISE SPECIFIED.

UNLESS OTHERWISE SPECIFIED DIMENSIONS ARE IN INCHES	APPROVAL	DATE
TOLERANCES ARE AS FOLLOWS: DECIMAL: .XX = ±0.01 XXX = ±0.005 ANGULAR: < = ±0.5°	DWN BY: M. TAGUPA	3DEC20
FINISH: 125 ✓ MAXIMUM	CHK BY: R.D.M.	3DEC20
	APP BY: R.D.M.	3DEC20

GLENTEK
"Solutions for Motion Control"

208 Standard Street
El Segundo, CA 90245 USA
310.322.3025 FAX 310.322.7705
www.glenetek.com

DRAWING TITLE
INSTALLATION DRAWING

SIZE C	MODEL GM2340-11	DRAWING NUMBER 30281-1	REV A
-----------	--------------------	---------------------------	----------

SCALE: 1.75:1 FILE NAME: 30281-1RA.DWG SHEET 1 OF 1
CONFIGURATION CODE: GM2340-11-00006310-370A