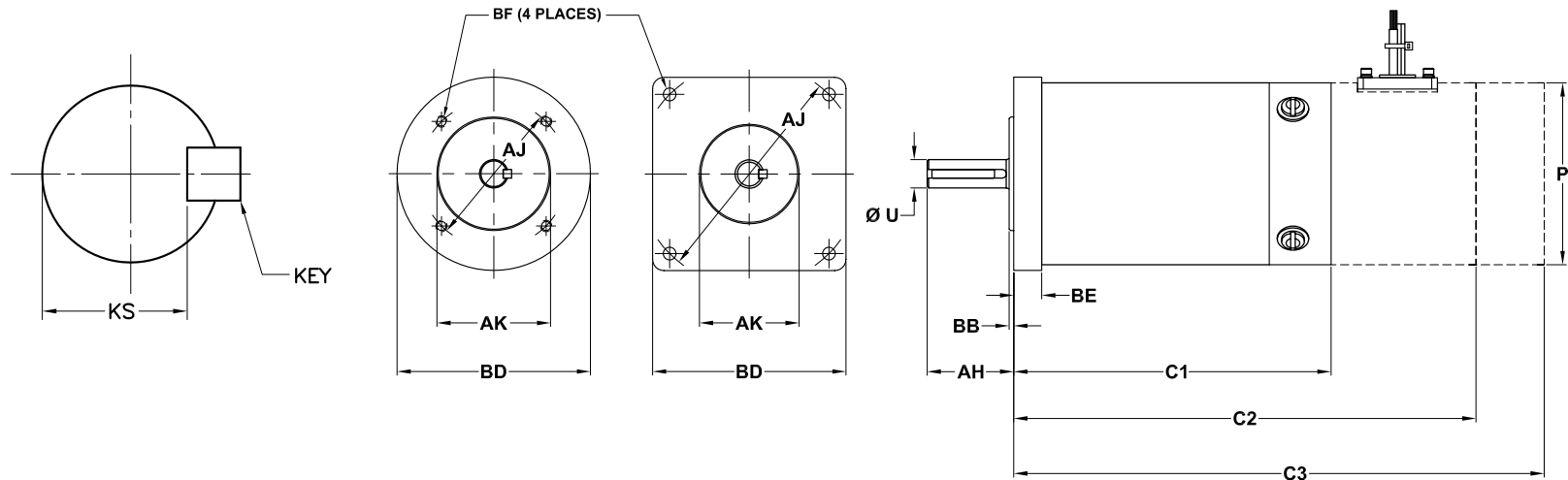


GLENTEK GM2320 & GM2340 DC BRUSH SERVO MOTOR DIMENSIONS



Model Number	Flange Type	Lbs (Kg)	C1	C2	C3	P (max)	Shaft				Flange/Face				Mounting Hole		
							AH	U (max)	KEY	KS	AJ	AK	BB	BD	BE (max)	BF Dia.	Tap
GM2320	Round	3.0 (1.4)	3.69 (93.7)	5.68 (144.3)	7.04 (178.8)	2.25 (57.2)	1.00 (25.4)	0.2500 (6.350)	-	-	1.531 (38.89)	1.000 (25.40)	0.10 (2.5)	2.00 (50.8)	0.30 (7.6)	-	6-32 X .38
	Square	3.0 (1.4)	3.69 (93.7)	5.68 (144.3)	7.04 (178.8)	2.25 (57.2)	1.00 (25.4)	0.2500 (6.350)	-	-	2.625 (66.68)	1.500 (38.10)	0.10 (2.5)	2.25 (57.2)	0.30 (7.6)	0.213 (5.41)	THRU
	NEMA 23	3.0 (1.4)	3.69 (93.7)	5.68 (144.3)	7.04 (178.8)	2.25 (57.2)	0.81 (20.6)	0.2500 (6.350)	-	-	2.625 (66.68)	1.500 (38.10)	0.10 (2.5)	2.25 (57.2)	0.30 (7.6)	0.213 (5.41)	THRU
GM2340	Round	4.0 (1.8)	5.3 (134.6)	7.29 (185.2)	8.65 (219.7)	2.25 (57.2)	1.00 (25.4)	0.2500 (6.350)	-	-	1.531 (38.89)	1.000 (25.40)	0.10 (2.5)	2.00 (50.8)	0.30 (7.6)	-	6-32 X .38
	Square	4.0 (1.8)	5.3 (134.6)	7.29 (185.2)	8.65 (219.7)	2.25 (57.2)	1.00 (25.4)	0.2500 (6.350)	-	-	2.625 (66.68)	1.500 (38.10)	0.10 (2.5)	2.25 (57.2)	0.30 (7.6)	0.213 (5.41)	THRU
	NEMA 23	4.0 (1.8)	5.3 (134.6)	7.29 (185.2)	8.65 (219.7)	2.25 (57.2)	0.81 (20.6)	0.2500 (6.350)	-	-	2.625 (66.68)	1.500 (38.10)	0.10 (2.5)	2.25 (57.2)	0.30 (7.6)	0.213 (5.41)	THRU

Dimensions are in **inches** (mm)

C1 = BARE MOTOR, C2 = MOTOR WITH TACHOMETER OR ENCODER, C3 = MOTOR WITH TACHOMETER AND ENCODER