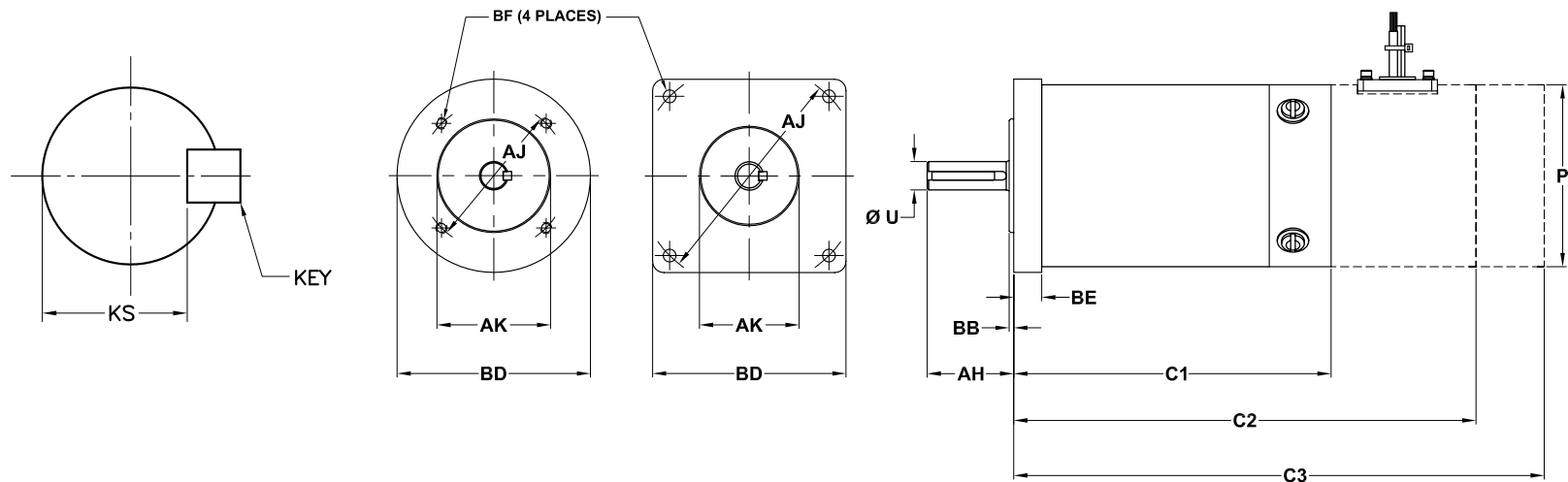


GLENTEK GM3310, GM3320, & GM3330 DC BRUSH SERVO MOTOR DIMENSIONS

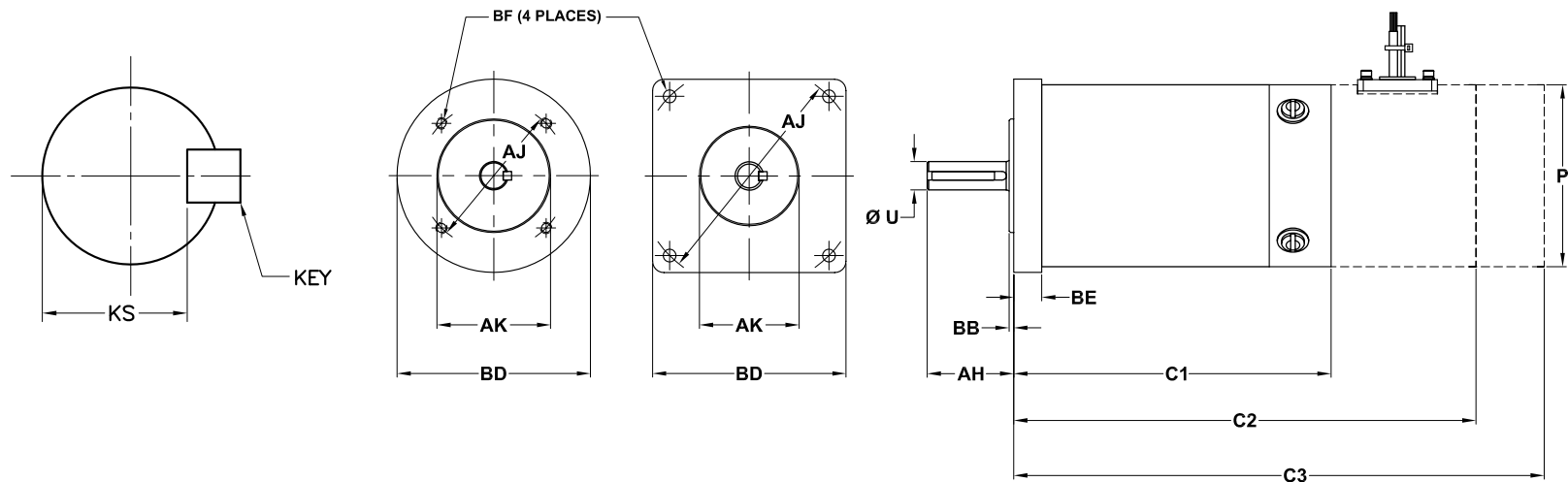


Model Number	Flange Type	Lbs (Kg)	C1	C2	C3	P (max)	Shaft				Flange/Face				Mounting Hole		
							AH	U (max)	KEY	KS	AJ	AK	BB	BD	BE (max)	BF Dia.	Tap
GM3310	Round	5.0 (2.3)	3.72 (94.5)	6.45 (163.8)	7.71 (195.8)	3.25 (82.6)	1.87 (47.5)	0.5000 (12.700)	.125 SQ. X 1.00	.420-.430	2.500 (63.50)	3.000 (76.20)	0.37 (9.4)	3.25 (82.6)	0.22 (5.6)	-	10-32 X .50
	Square	5.0 (2.3)	3.98 (101.1)	6.71 (170.4)	7.97 (202.4)	3.25 (82.6)	1.60 (40.6)	0.5000 (12.700)	.125 SQ. X 1.00	.420-.430	3.875 (98.43)	2.875 (73.03)	0.10 (2.5)	3.25 (82.6)	0.48 (12.2)	0.220 (5.59)	THRU
	NEMA 34	5.0 (2.3)	3.98 (101.1)	6.71 (170.4)	7.97 (202.4)	3.25 (82.6)	1.19 (30.2)	0.3750 (9.530)	-	-	3.875 (98.43)	2.875 (73.03)	0.10 (2.5)	3.25 (82.6)	0.48 (12.2)	0.220 (5.59)	THRU
GM3320	Round	7.0 (3.2)	4.34 (110.2)	7.07 (179.6)	8.33 (211.6)	3.25 (82.6)	1.87 (47.5)	0.5000 (12.700)	.125 SQ. X 1.00	.420-.430	2.500 (63.50)	3.000 (76.20)	0.37 (9.4)	3.25 (82.6)	0.22 (5.6)	-	10-32 X .50
	Square	7.0 (3.2)	4.61 (117.1)	7.34 (186.4)	8.6 (218.4)	3.25 (82.6)	1.60 (40.6)	0.5000 (12.700)	.125 SQ. X 1.00	.420-.430	3.875 (98.43)	2.875 (73.03)	0.10 (2.5)	3.25 (82.6)	0.48 (12.2)	0.220 (5.59)	THRU
	NEMA 34	7.0 (3.2)	4.61 (117.1)	7.34 (186.4)	8.6 (218.4)	3.25 (82.6)	1.19 (30.2)	0.3750 (9.530)	-	-	3.875 (98.43)	2.875 (73.03)	0.10 (2.5)	3.25 (82.6)	0.48 (12.2)	0.220 (5.59)	THRU
GM3330	Round	8.0 (3.6)	5.65 (143.5)	8.38 (212.9)	9.64 (244.9)	3.25 (82.6)	1.87 (47.5)	0.5000 (12.700)	.125 SQ. X 1.00	.420-.430	2.500 (63.50)	3.000 (76.20)	0.37 (9.4)	3.25 (82.6)	0.22 (5.6)	-	10-32 X .50
	Square	8.0 (3.6)	5.92 (150.4)	8.65 (219.7)	9.91 (251.7)	3.25 (82.6)	1.60 (40.6)	0.5000 (12.700)	.125 SQ. X 1.00	.420-.430	3.875 (98.43)	2.875 (73.03)	0.10 (2.5)	3.25 (82.6)	0.48 (12.2)	0.220 (5.59)	THRU
	NEMA 34	8.0 (3.6)	5.92 (150.4)	8.65 (219.7)	9.91 (251.7)	3.25 (82.6)	1.19 (30.2)	0.3750 (9.530)	-	-	3.875 (98.43)	2.875 (73.03)	0.10 (2.5)	3.25 (82.6)	0.48 (12.2)	0.220 (5.59)	THRU

Dimensions are in **inches** (mm)

C1 = BARE MOTOR, C2 = MOTOR WITH TACHOMETER OR ENCODER, C3 = MOTOR WITH TACHOMETER AND ENCODER

GLENTEK GM3340 & GMR3340 DC BRUSH SERVO MOTOR DIMENSIONS



Model Number	Flange Type	Lbs (Kg)	C1	C2	C3	P (max)	Shaft				Flange/Face				Mounting Hole		
							AH	U (max)	KEY	KS	AJ	AK	BB	BD	BE (max)	BF Dia.	Tap
GM3340	Round	10.0 (4.5)	6.31 (160.3)	9.04 (229.6)	10.3 (261.6)	3.25 (82.6)	1.87 (47.5)	0.5000 (12.700)	.125 SQ. X 1.00	.420-.430	2.500 (63.50)	3.000 (76.20)	0.37 (9.4)	3.25 (82.6)	0.22 (5.6)	-	10-32 X .50
	Square	10.0 (4.5)	6.57 (166.9)	9.3 (236.2)	10.56 (268.2)	3.25 (82.6)	1.60 (40.6)	0.5000 (12.700)	.125 SQ. X 1.00	.420-.430	3.875 (98.43)	2.875 (73.03)	0.10 (2.5)	3.25 (82.6)	0.48 (12.2)	0.220 (5.59)	THRU
	NEMA 34	10.0 (4.5)	6.57 (166.9)	9.3 (236.2)	10.56 (268.2)	3.25 (82.6)	1.19 (30.2)	0.3750 (9.530)	-	-	3.875 (98.43)	2.875 (73.03)	0.10 (2.5)	3.25 (82.6)	0.48 (12.2)	0.220 (5.59)	THRU
GMR3340	Round	10.0 (4.5)	5.98 (151.9)	8.71 (221.2)	9.97 (253.2)	3.25 (82.6)	1.87 (47.5)	0.5000 (12.700)	.125 SQ. X 1.00	.420-.430	2.500 (63.50)	3.000 (76.20)	0.37 (9.4)	3.25 (82.6)	0.22 (5.6)	-	10-32 X .50
	Square	10.0 (4.5)	5.88 (149.4)	8.61 (218.7)	9.87 (250.7)	3.25 (82.6)	1.60 (40.6)	0.5000 (12.700)	.125 SQ. X 1.00	.420-.430	3.875 (98.43)	2.875 (73.03)	0.10 (2.5)	3.25 (82.6)	0.48 (12.2)	0.220 (5.59)	THRU
	NEMA 34	10.0 (4.5)	5.88 (149.4)	8.61 (218.7)	9.87 (250.7)	3.25 (82.6)	1.19 (30.2)	0.3750 (9.530)	-	-	3.875 (98.43)	2.875 (73.03)	0.10 (2.5)	3.25 (82.6)	0.48 (12.2)	0.220 (5.59)	THRU

Dimensions are in **inches** (mm)

C1 = BARE MOTOR, C2 = MOTOR WITH TACHOMETER OR ENCODER, C3 = MOTOR WITH TACHOMETER AND ENCODER