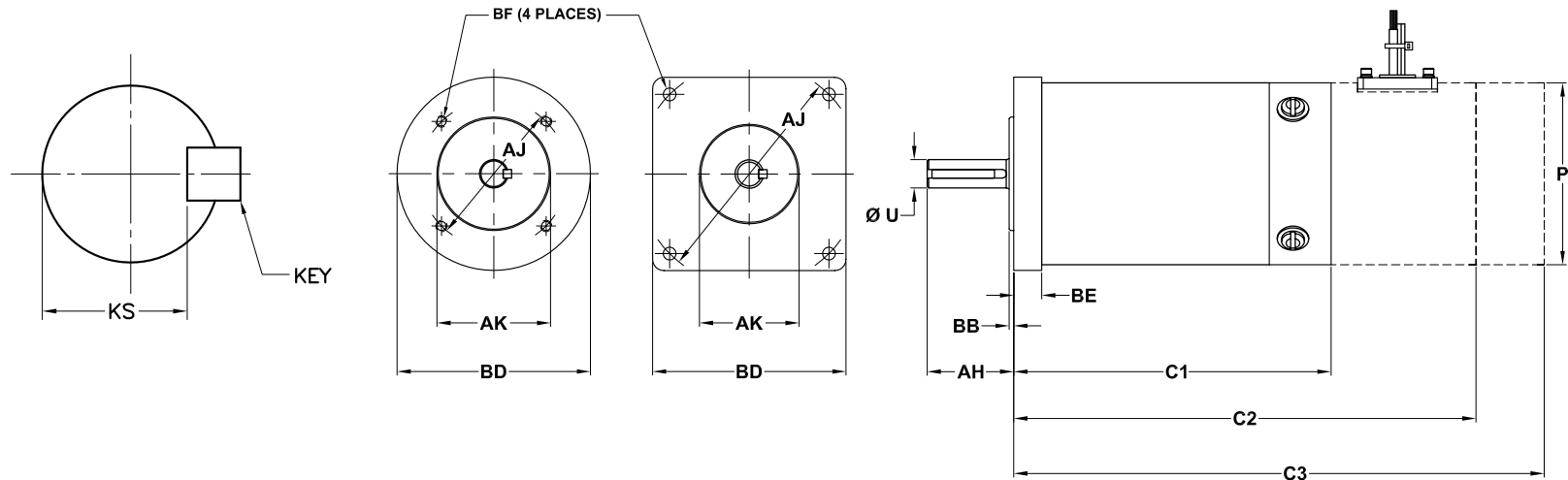


GLENTEK GM4010 DC BRUSH SERVO MOTOR DIMENSIONS

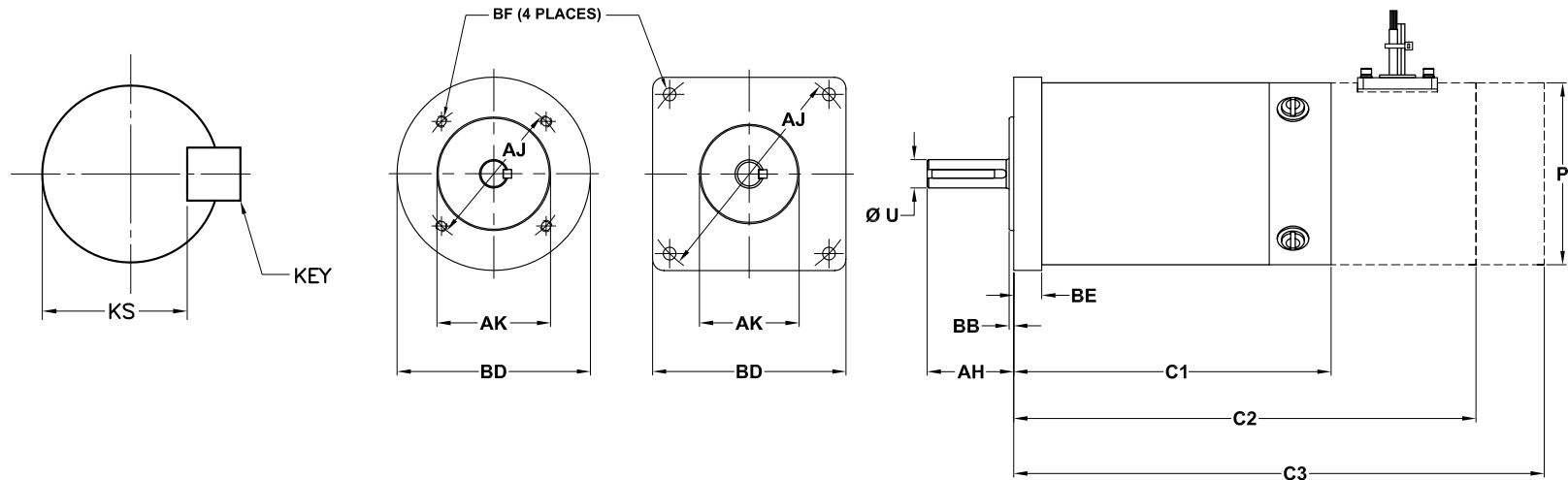


Model Number	Flange Type	Lbs (Kg)	C1	C2	C3	P (max)	Shaft				Flange/Face				Mounting Hole		
							AH	U (max)	KEY	KS	AJ	AK	BB	BD	BE (max)	BF Dia.	Tap
GM4010	Round	8.0 (3.6)	5.25 (133.4)	7.26 (184.4)	8.39 (213.1)	4.00 (101.6)	1.90 (48.3)	0.6250 (15.880)	.188 SQ. X 1.50	.507-.517	3.250 (82.55)	2.498 (63.45)	0.10 (2.5)	4.00 (101.6)	0.62 (15.7)	-	1/4-20 X .50
	M1 (Square)	8.0 (3.6)	5.25 (133.4)	7.26 (184.4)	8.39 (213.1)	4.00 (101.6)	1.90 (48.3)	0.6250 (15.880)	.188 SQ. X 1.50	.507-.517	4.950 (125.73)	2.187 (55.55)	0.06 (1.5)	4.25 (108.0)	0.44 (11.2)	0.281 (7.14)	THRU
	M2 (Square)	8.0 (3.6)	5.25 (133.4)	7.26 (184.4)	8.39 (213.1)	4.00 (101.6)	1.90 (48.3)	0.6250 (15.880)	.188 SQ. X 1.50	.507-.517	5.741 (145.82)	3.000 (76.20)	0.10 (2.5)	5.00 (127.0)	0.44 (11.2)	0.281 (7.14)	THRU
	M3 (Square)	8.0 (3.6)	5.25 (133.4)	7.26 (184.4)	8.39 (213.1)	4.00 (101.6)	1.90 (48.3)	0.6250 (15.880)	.188 SQ. X 1.50	.507-.517	5.875 (149.23)	4.500 (114.30)	0.10 (2.5)	5.00 (127.0)	0.44 (11.2)	-	3/8-16 THRU
	NEMA 42	8.0 (3.6)	5.25 (133.4)	7.26 (184.4)	8.39 (213.1)	4.00 (101.6)	1.32 (33.5)	0.6250 (15.880)	.188 SQ. X 1.50	.507-.517	4.950 (125.73)	2.187 (55.55)	0.06 (1.5)	4.25 (108.0)	0.44 (11.2)	0.281 (7.14)	THRU
	NEMA 56C	8.0 (3.6)	5.25 (133.4)	7.26 (184.4)	8.39 (213.1)	4.00 (101.6)	2.06 (52.3)	0.6250 (15.880)	.188 SQ. X 1.50	.507-.517	5.875 (149.23)	4.500 (114.30)	0.09 (2.3)	6.50 (165.1)	0.44 (11.2)	-	3/8-16 THRU

Dimensions are in **inches** (mm)

C1 = BARE MOTOR, C2 = MOTOR WITH TACHOMETER OR ENCODER, C3 = MOTOR WITH TACHOMETER AND ENCODER

GLENTEK GM4020 DC BRUSH SERVO MOTOR DIMENSIONS

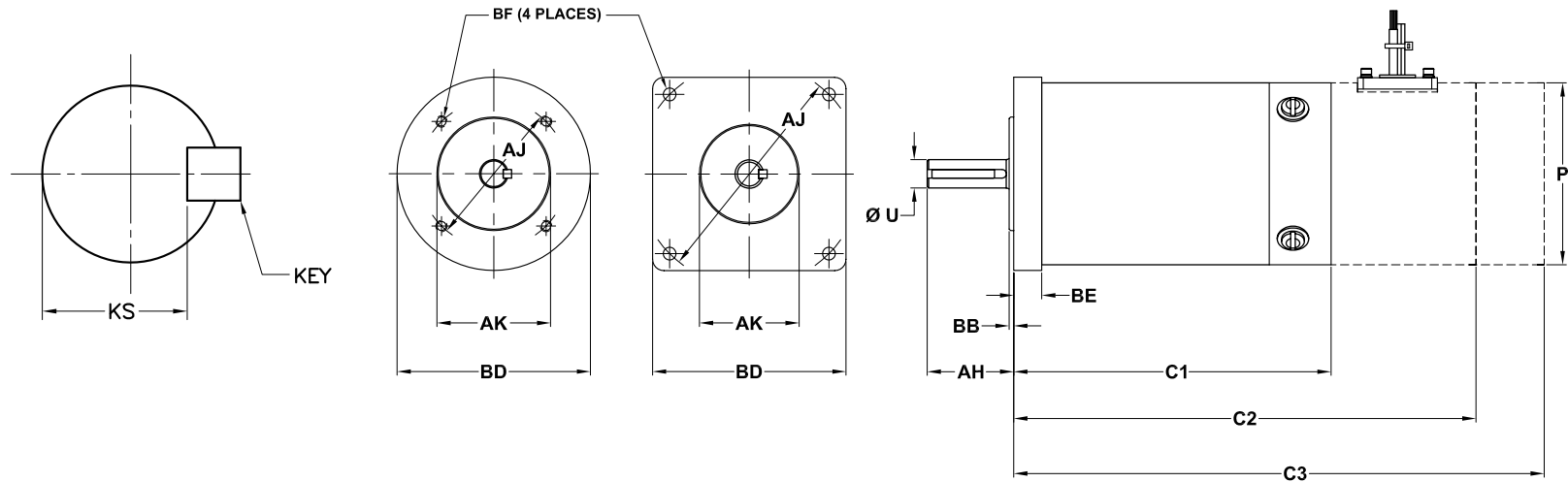


Model Number	Flange Type	Lbs (Kg)	C1	C2	C3	P (max)	Shaft				Flange/Face				Mounting Hole		
							AH	U (max)	KEY	KS	AJ	AK	BB	BD	BE (max)	BF Dia.	Tap
GM4020	Round	12.0 (5.5)	6.56 (166.6)	8.57 (217.7)	9.7 (246.4)	4.00 (101.6)	1.90 (48.3)	0.6250 (15.880)	.188 SQ. X 1.50	.507-.517	3.250 (82.55)	2.498 (63.45)	0.10 (2.5)	4.00 (101.6)	0.62 (15.7)	-	1/4-20 X .50
	M1 (Square)	12.0 (5.5)	6.56 (166.6)	8.57 (217.7)	9.7 (246.4)	4.00 (101.6)	1.90 (48.3)	0.6250 (15.880)	.188 SQ. X 1.50	.507-.517	4.950 (125.73)	2.187 (55.55)	0.06 (1.5)	4.25 (108.0)	0.44 (11.2)	0.281 (7.14)	THRU
	M2 (Square)	12.0 (5.5)	6.56 (166.6)	8.57 (217.7)	9.7 (246.4)	4.00 (101.6)	1.90 (48.3)	0.6250 (15.880)	.188 SQ. X 1.50	.507-.517	5.741 (145.82)	3.000 (76.20)	0.10 (2.5)	5.00 (127.0)	0.44 (11.2)	0.281 (7.14)	THRU
	M3 (Square)	12.0 (5.5)	6.56 (166.6)	8.57 (217.7)	9.7 (246.4)	4.00 (101.6)	1.90 (48.3)	0.6250 (15.880)	.188 SQ. X 1.50	.507-.517	5.875 (149.23)	4.500 (114.30)	0.10 (2.5)	5.00 (127.0)	0.44 (11.2)	-	3/8-16 THRU
	NEMA 42	12.0 (5.5)	6.56 (166.6)	8.57 (217.7)	9.7 (246.4)	4.00 (101.6)	1.32 (33.5)	0.6250 (15.880)	.188 SQ. X 1.50	.507-.517	4.950 (125.73)	2.187 (55.55)	0.06 (1.5)	4.25 (108.0)	0.44 (11.2)	0.281 (7.14)	THRU
	NEMA 56C	12.0 (5.5)	6.56 (166.6)	8.57 (217.7)	9.7 (246.4)	4.00 (101.6)	2.06 (52.3)	0.6250 (15.880)	.188 SQ. X 1.50	.507-.517	5.875 (149.23)	4.500 (114.30)	0.09 (2.3)	6.50 (165.1)	0.44 (11.2)	-	3/8-16 THRU

Dimensions are in **inches** (mm)

C1 = BARE MOTOR, C2 = MOTOR WITH TACHOMETER OR ENCODER, C3 = MOTOR WITH TACHOMETER AND ENCODER

GLENTEK GM4040 DC BRUSH SERVO MOTOR DIMENSIONS

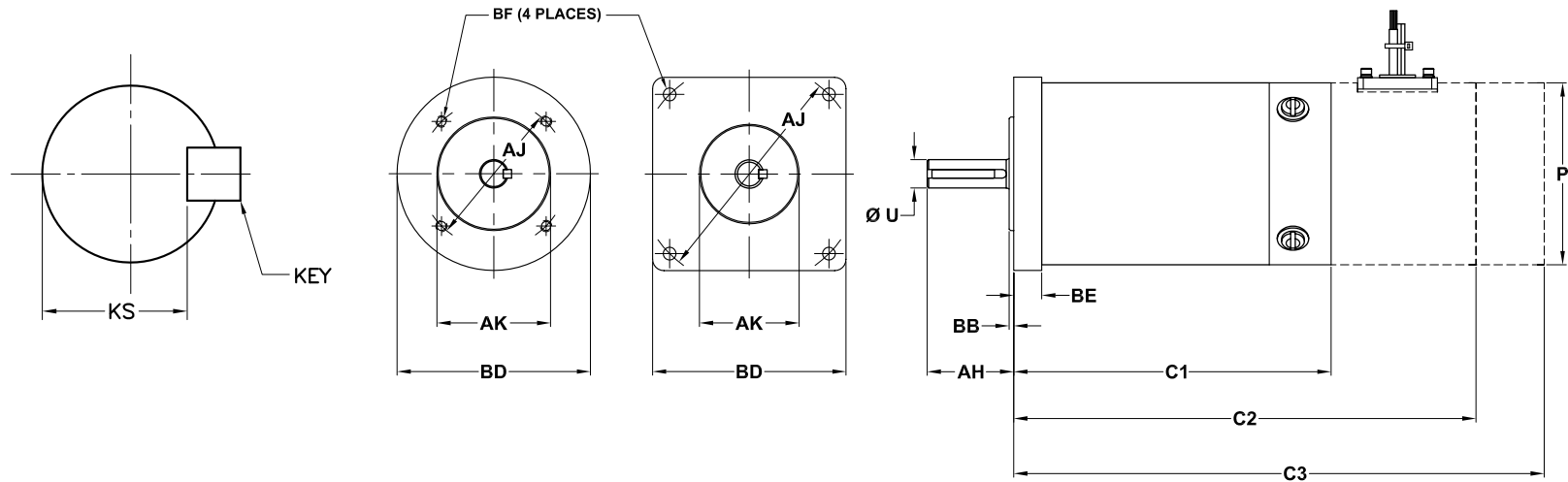


Model Number	Flange Type	Lbs (Kg)	C1	C2	C3	P (max)	Shaft				Flange/Face				Mounting Hole		
							AH	U (max)	KEY	KS	AJ	AK	BB	BD	BE (max)	BF Dia.	Tap
GM4040	Round	17.0 (7.7)	8.63 (219.2)	10.64 (270.3)	11.77 (299.0)	4.00 (101.6)	1.90 (48.3)	0.6250 (15.880)	.188 SQ. X 1.50	.507-.517	3.250 (82.55)	2.498 (63.45)	0.10 (2.5)	4.00 (101.6)	0.62 (15.7)	-	1/4-20 X .50
	M1 (Square)	17.0 (7.7)	8.63 (219.2)	10.64 (270.3)	11.77 (299.0)	4.00 (101.6)	1.90 (48.3)	0.6250 (15.880)	.188 SQ. X 1.50	.507-.517	4.950 (125.73)	2.187 (55.55)	0.06 (1.5)	4.25 (108.0)	0.44 (11.2)	0.281 (7.14)	THRU
	M2 (Square)	17.0 (7.7)	8.63 (219.2)	10.64 (270.3)	11.77 (299.0)	4.00 (101.6)	1.90 (48.3)	0.6250 (15.880)	.188 SQ. X 1.50	.507-.517	5.741 (145.82)	3.000 (76.20)	0.10 (2.5)	5.00 (127.0)	0.44 (11.2)	0.281 (7.14)	THRU
	M3 (Square)	17.0 (7.7)	8.63 (219.2)	10.64 (270.3)	11.77 (299.0)	4.00 (101.6)	1.90 (48.3)	0.6250 (15.880)	.188 SQ. X 1.50	.507-.517	5.875 (149.23)	4.500 (114.30)	0.10 (2.5)	5.00 (127.0)	0.44 (11.2)	-	3/8-16 THRU
	NEMA 42	17.0 (7.7)	8.63 (219.2)	10.64 (270.3)	11.77 (299.0)	4.00 (101.6)	1.32 (33.5)	0.6250 (15.880)	.188 SQ. X 1.50	.507-.517	4.950 (125.73)	2.187 (55.55)	0.06 (1.5)	4.25 (108.0)	0.44 (11.2)	0.281 (7.14)	THRU
	NEMA 56C	17.0 (7.7)	8.63 (219.2)	10.64 (270.3)	11.77 (299.0)	4.00 (101.6)	2.06 (52.3)	0.6250 (15.880)	.188 SQ. X 1.50	.507-.517	5.875 (149.23)	4.500 (114.30)	0.09 (2.3)	6.50 (165.1)	0.44 (11.2)	-	3/8-16 THRU

Dimensions are in **inches** (mm)

C1 = BARE MOTOR, C2 = MOTOR WITH TACHOMETER OR ENCODER, C3 = MOTOR WITH TACHOMETER AND ENCODER

GLENTEK GM4050 DC BRUSH SERVO MOTOR DIMENSIONS

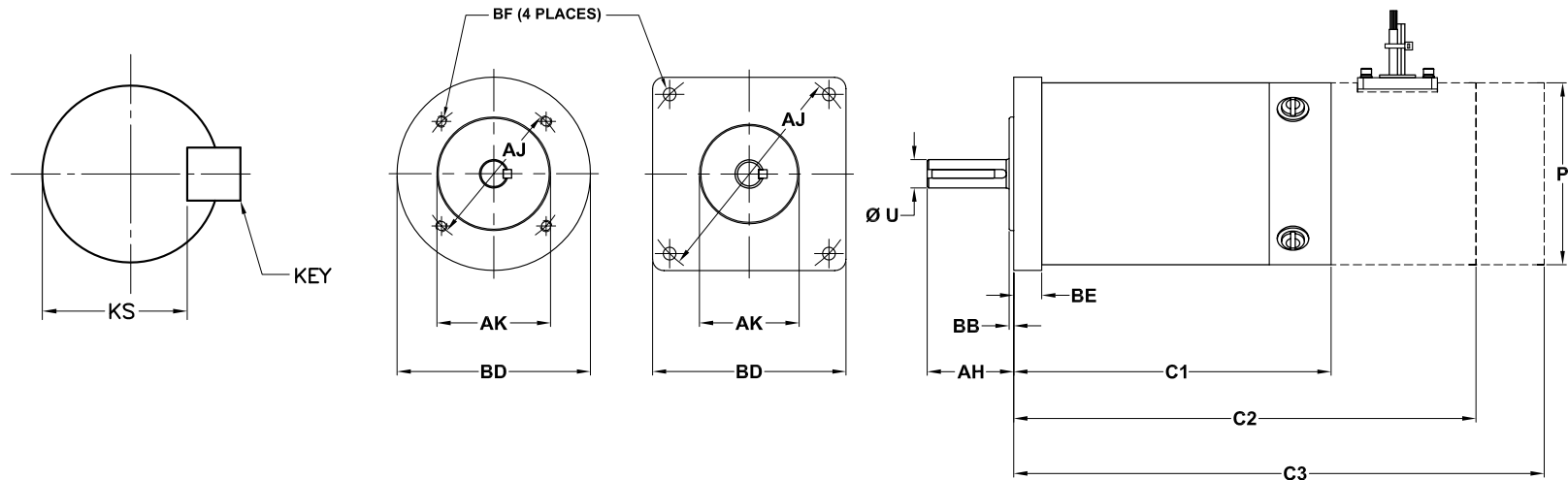


Model Number	Flange Type	Lbs (Kg)	C1	C2	C3	P (max)	Shaft				Flange/Face				Mounting Hole		
							AH	U (max)	KEY	KS	AJ	AK	BB	BD	BE (max)	BF Dia.	Tap
GM4050	Round	20.0 (9.1)	9.63 (244.6)	11.64 (295.7)	12.77 (324.4)	4.00 (101.6)	1.90 (48.3)	0.6250 (15.880)	.188 SQ. X 1.50	.507-.517	3.250 (82.55)	2.498 (63.45)	0.10 (2.5)	4.00 (101.6)	0.62 (15.7)	-	1/4-20 X .50
	M1 (Square)	20.0 (9.1)	9.63 (244.6)	11.64 (295.7)	12.77 (324.4)	4.00 (101.6)	1.90 (48.3)	0.6250 (15.880)	.188 SQ. X 1.50	.507-.517	4.950 (125.73)	2.187 (55.55)	0.06 (1.5)	4.25 (108.0)	0.44 (11.2)	0.281 (7.14)	THRU
	M2 (Square)	20.0 (9.1)	9.63 (244.6)	11.64 (295.7)	12.77 (324.4)	4.00 (101.6)	1.90 (48.3)	0.6250 (15.880)	.188 SQ. X 1.50	.507-.517	5.741 (145.82)	3.000 (76.20)	0.10 (2.5)	5.00 (127.0)	0.44 (11.2)	0.281 (7.14)	THRU
	M3 (Square)	20.0 (9.1)	9.63 (244.6)	11.64 (295.7)	12.77 (324.4)	4.00 (101.6)	1.90 (48.3)	0.6250 (15.880)	.188 SQ. X 1.50	.507-.517	5.875 (149.23)	4.500 (114.30)	0.10 (2.5)	5.00 (127.0)	0.44 (11.2)	-	3/8-16 THRU
	NEMA 42	20.0 (9.1)	9.63 (244.6)	11.64 (295.7)	12.77 (324.4)	4.00 (101.6)	1.32 (33.5)	0.6250 (15.880)	.188 SQ. X 1.50	.507-.517	4.950 (125.73)	2.187 (55.55)	0.06 (1.5)	4.25 (108.0)	0.44 (11.2)	0.281 (7.14)	THRU
	NEMA 56C	20.0 (9.1)	9.63 (244.6)	11.64 (295.7)	12.77 (324.4)	4.00 (101.6)	2.06 (52.3)	0.6250 (15.880)	.188 SQ. X 1.50	.507-.517	5.875 (149.23)	4.500 (114.30)	0.09 (2.3)	6.50 (165.1)	0.44 (11.2)	-	3/8-16 THRU

Dimensions are in **inches** (mm)

C1 = BARE MOTOR, C2 = MOTOR WITH TACHOMETER OR ENCODER, C3 = MOTOR WITH TACHOMETER AND ENCODER

GLENTEK GM4060 DC BRUSH SERVO MOTOR DIMENSIONS



Model Number	Flange Type	Lbs (Kg)	C1	C2	C3	P (max)	Shaft				Flange/Face				Mounting Hole		
							AH	U (max)	KEY	KS	AJ	AK	BB	BD	BE (max)	BF Dia.	Tap
GM4060	Round	23.0 (10.5)	10.4 (264.2)	12.41 (315.2)	13.54 (343.9)	4.00 (101.6)	1.90 (48.3)	0.6250 (15.880)	.188 SQ. X 1.50	.507-.517	3.250 (82.55)	2.498 (63.45)	0.10 (2.5)	4.00 (101.6)	0.62 (15.7)	-	1/4-20 X .50
	M1 (Square)	23.0 (10.5)	10.4 (264.2)	12.41 (315.2)	13.54 (343.9)	4.00 (101.6)	1.90 (48.3)	0.6250 (15.880)	.188 SQ. X 1.50	.507-.517	4.950 (125.73)	2.187 (55.55)	0.06 (1.5)	4.25 (108.0)	0.44 (11.2)	0.281 (7.14)	THRU
	M2 (Square)	23.0 (10.5)	10.4 (264.2)	12.41 (315.2)	13.54 (343.9)	4.00 (101.6)	1.90 (48.3)	0.6250 (15.880)	.188 SQ. X 1.50	.507-.517	5.741 (145.82)	3.000 (76.20)	0.10 (2.5)	5.00 (127.0)	0.44 (11.2)	0.281 (7.14)	THRU
	M3 (Square)	23.0 (10.5)	10.4 (264.2)	12.41 (315.2)	13.54 (343.9)	4.00 (101.6)	1.90 (48.3)	0.6250 (15.880)	.188 SQ. X 1.50	.507-.517	5.875 (149.23)	4.500 (114.30)	0.10 (2.5)	5.00 (127.0)	0.44 (11.2)	-	3/8-16 THRU
	NEMA 42	23.0 (10.5)	10.4 (264.2)	12.41 (315.2)	13.54 (343.9)	4.00 (101.6)	1.32 (33.5)	0.6250 (15.880)	.188 SQ. X 1.50	.507-.517	4.950 (125.73)	2.187 (55.55)	0.06 (1.5)	4.25 (108.0)	0.44 (11.2)	0.281 (7.14)	THRU
	NEMA 56C	23.0 (10.5)	10.4 (264.2)	12.41 (315.2)	13.54 (343.9)	4.00 (101.6)	2.06 (52.3)	0.6250 (15.880)	.188 SQ. X 1.50	.507-.517	5.875 (149.23)	4.500 (114.30)	0.09 (2.3)	6.50 (165.1)	0.44 (11.2)	-	3/8-16 THRU

Dimensions are in **inches** (mm)

C1 = BARE MOTOR, C2 = MOTOR WITH TACHOMETER OR ENCODER, C3 = MOTOR WITH TACHOMETER AND ENCODER