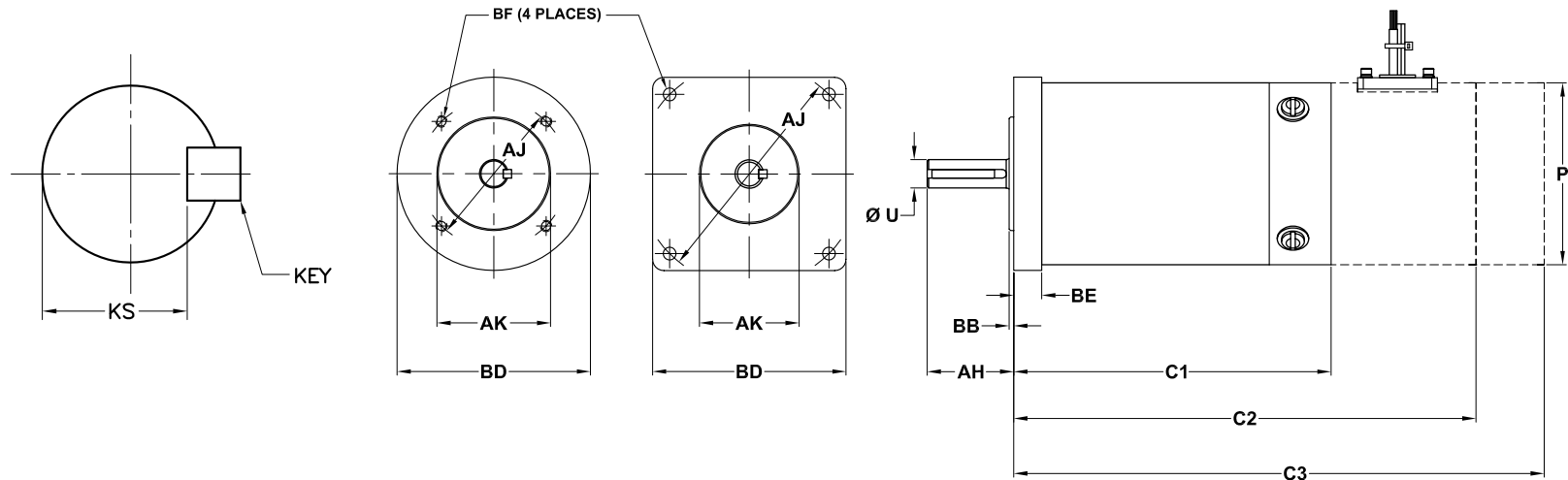


GLENTEK GM6060 & GM6090 DC BRUSH SERVO MOTOR DIMENSIONS



Model Number	Flange Type	Lbs (Kg)	C1	C2	C3	P (max)	Shaft				Flange/Face				Mounting Hole		
							AH	U (max)	KEY	KS	AJ	AK	BB	BD	BE (max)	BF Dia.	Tap
GM6060	Round	41.0 (18.6)	13.92 (353.6)	13.92 (353.6)	17.1 (434.3)	5.65 (143.5)	1.70 (43.2)	0.8750 (22.230)	.188 SQ. X 1.50	.761-.771 (95.25)	3.750 (95.25)	3.000 (76.20)	0.09 (2.3)	5.12 (130.1)	0.44 (11.2)	-	3/8-16 X .50
	Square	41.0 (18.6)	13.92 (353.6)	13.92 (353.6)	17.1 (434.3)	5.65 (143.5)	1.70 (43.2)	0.8750 (22.230)	.188 SQ. X 1.50	.761-.771 (95.25)	5.875 (149.23)	3.000 (76.20)	0.09 (2.3)	5.17 (131.3)	0.44 (11.2)	0.406 (10.31)	THRU
	NEMA 56C	41.0 (18.6)	13.92 (353.6)	13.92 (353.6)	17.1 (434.3)	5.65 (143.5)	2.06 (52.3)	0.6250 (15.880)	.188 SQ. X 1.50	.507-.517 (12.92)	5.875 (149.23)	4.500 (114.30)	0.09 (2.3)	6.50 (165.1)	0.44 (11.2)	-	3/8-16 THRU
GM6090	Round	56.0 (25.5)	16.92 (429.8)	16.92 (429.8)	20.1 (510.5)	5.65 (143.5)	1.70 (43.2)	0.8750 (22.230)	.188 SQ. X 1.50	.761-.771 (95.25)	3.750 (95.25)	3.000 (76.20)	0.09 (2.3)	5.12 (130.1)	0.44 (11.2)	-	3/8-16 X .50
	Square	56.0 (25.5)	16.92 (429.8)	16.92 (429.8)	20.1 (510.5)	5.65 (143.5)	1.70 (43.2)	0.8750 (22.230)	.188 SQ. X 1.50	.761-.771 (95.25)	5.875 (149.23)	3.000 (76.20)	0.09 (2.3)	5.17 (131.3)	0.44 (11.2)	0.406 (10.31)	THRU
	NEMA 56C	56.0 (25.5)	16.92 (429.8)	16.92 (429.8)	20.1 (510.5)	5.65 (143.5)	2.06 (52.3)	0.6250 (15.880)	.188 SQ. X 1.50	.507-.517 (12.92)	5.875 (149.23)	4.500 (114.30)	0.09 (2.3)	6.50 (165.1)	0.44 (11.2)	-	3/8-16 THRU

Dimensions are in **inches** (mm)

C1 = BARE MOTOR, C2 = MOTOR WITH TACHOMETER OR ENCODER, C3 = MOTOR WITH TACHOMETER AND ENCODER