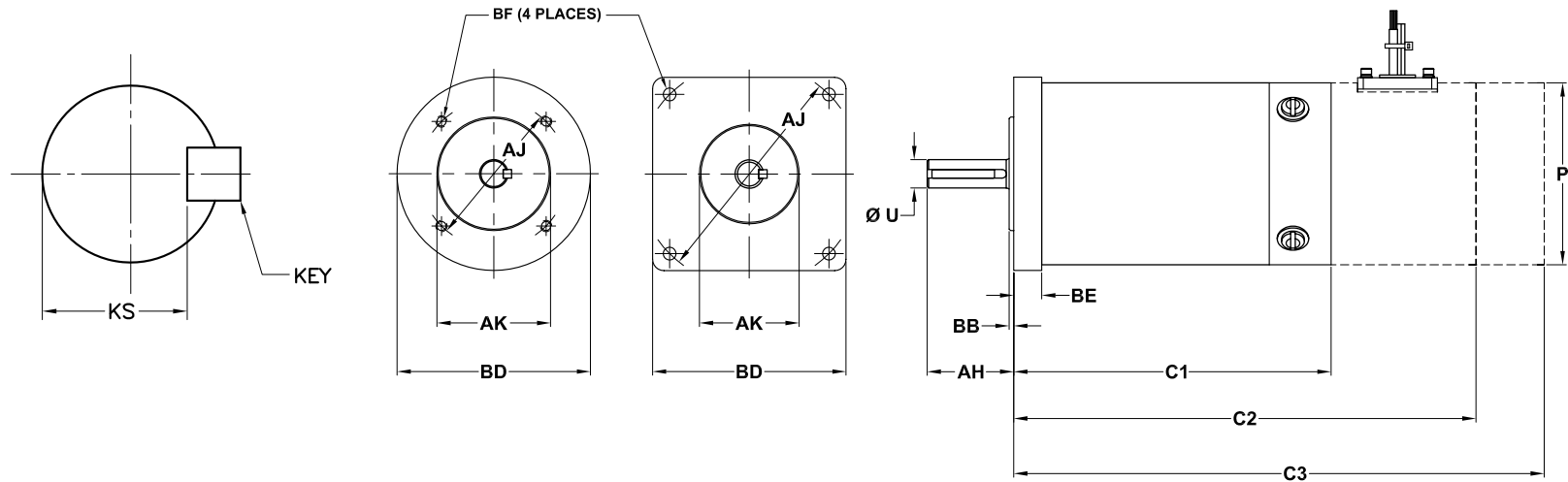


GLENTEK GMR4910 DC BRUSH SERVO MOTOR DIMENSIONS

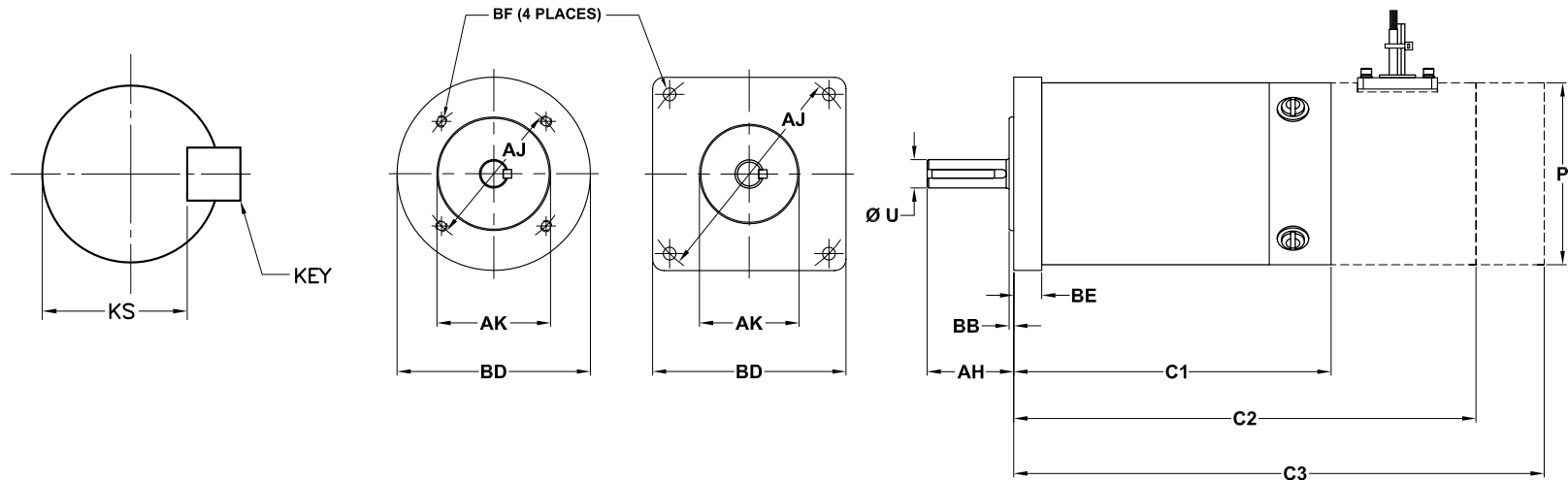


Model Number	Flange Type	Lbs (Kg)	C1	C2	C3	P (max)	Shaft				Flange/Face				Mounting Hole		
							AH	U (max)	KEY	KS	AJ	AK	BB	BD	BE (max)	BF Dia.	Tap
GMR4910	Round	18.0 (8.2)	8.1 (205.7)	8.1 (205.7)	11.28 (286.5)	4.90 (124.5)	1.90 (48.3)	0.6250 (15.880)	.188 SQ. X 1.50	.507-.517	3.250 (82.55)	2.498 (63.45)	0.10 (2.5)	4.00 (101.6)	0.62 (15.7)	-	1/4-20 X .50
	M1 (Square)	18.0 (8.2)	8.1 (205.7)	8.1 (205.7)	11.28 (286.5)	4.90 (124.5)	1.90 (48.3)	0.6250 (15.880)	.188 SQ. X 1.50	.507-.517	4.950 (125.73)	2.187 (55.55)	0.06 (1.5)	4.25 (108.0)	0.44 (11.2)	0.281 (7.14)	THRU
	M2 (Square)	18.0 (8.2)	8.1 (205.7)	8.1 (205.7)	11.28 (286.5)	4.90 (124.5)	1.90 (48.3)	0.6250 (15.880)	.188 SQ. X 1.50	.507-.517	5.741 (145.82)	3.000 (76.20)	0.10 (2.5)	5.00 (127.0)	0.44 (11.2)	0.281 (7.14)	THRU
	M3 (Square)	18.0 (8.2)	8.1 (205.7)	8.1 (205.7)	11.28 (286.5)	4.90 (124.5)	1.90 (48.3)	0.6250 (15.880)	.188 SQ. X 1.50	.507-.517	5.875 (149.23)	4.500 (114.30)	0.10 (2.5)	5.00 (127.0)	0.44 (11.2)	-	3/8-16 THRU
	NEMA 42	18.0 (8.2)	8.1 (205.7)	8.1 (205.7)	11.28 (286.5)	4.00 (101.6)	1.32 (33.5)	0.6250 (15.880)	.188 SQ. X 1.50	.507-.517	4.950 (125.73)	2.187 (55.55)	0.06 (1.5)	4.25 (108.0)	0.44 (11.2)	0.281 (7.14)	THRU
	NEMA 56C	18.0 (8.2)	8.1 (205.7)	8.1 (205.7)	11.28 (286.5)	4.90 (124.5)	2.06 (52.3)	0.6250 (15.880)	.188 SQ. X 1.50	.507-.517	5.875 (149.23)	4.500 (114.30)	0.09 (2.3)	6.50 (165.1)	0.44 (11.2)	-	3/8-16 THRU

Dimensions are in **inches** (mm)

C1 = BARE MOTOR, C2 = MOTOR WITH TACHOMETER OR ENCODER, C3 = MOTOR WITH TACHOMETER AND ENCODER

GLENTEK GM4920 DC BRUSH SERVO MOTOR DIMENSIONS

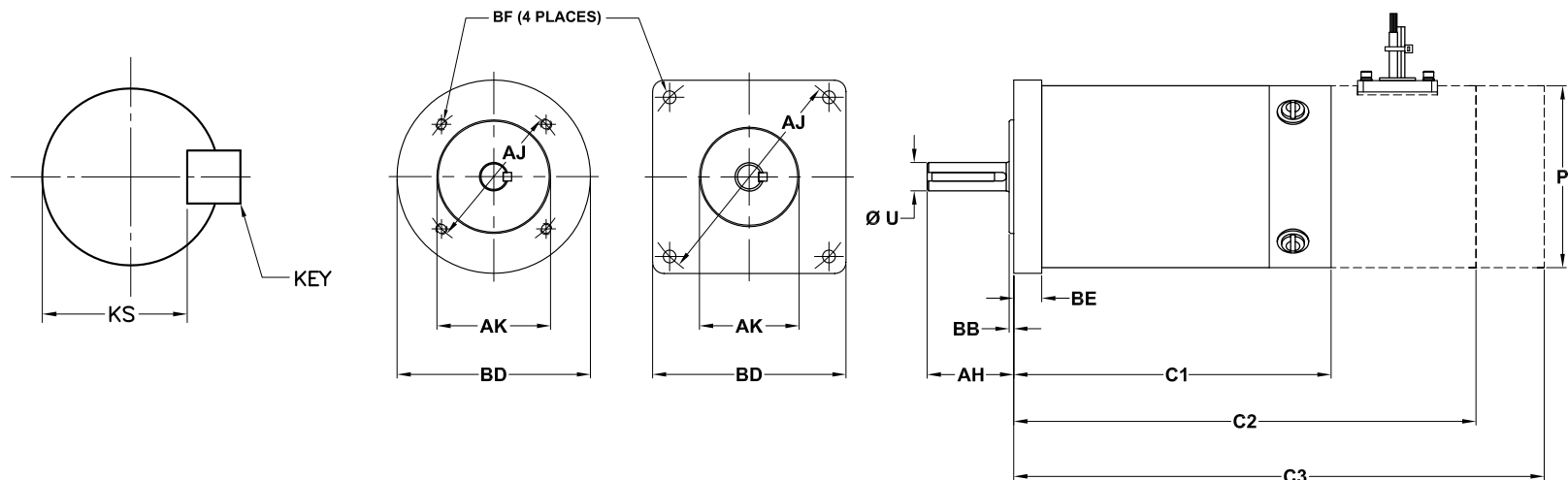


Model Number	Flange Type	Lbs (Kg)	C1	C2	C3	P (max)	Shaft				Flange/Face				Mounting Hole		
							AH	U (max)	KEY	KS	AJ	AK	BB	BD	BE (max)	BF Dia.	Tap
GMR4920	Round	23.0 (10.5)	9.2 (233.7)	9.2 (233.7)	12.38 (314.5)	4.9 (124.5)	1.90 (48.3)	0.6250 (15.880)	.188 SQ. X 1.50	.507-.517	3.250 (82.55)	2.498 (63.45)	0.10 (2.5)	4.00 (101.6)	0.62 (15.7)	-	1/4-20 X .50
	M1 (Square)	23.0 (10.5)	9.2 (233.7)	9.2 (233.7)	12.38 (314.5)	4.9 (124.5)	1.90 (48.3)	0.6250 (15.880)	.188 SQ. X 1.50	.507-.517	4.950 (125.73)	2.187 (55.55)	0.06 (1.5)	4.25 (108.0)	0.44 (11.2)	0.281 (7.14)	THRU
	M2 (Square)	23.0 (10.5)	9.2 (233.7)	9.2 (233.7)	12.38 (314.5)	4.9 (124.5)	1.90 (48.3)	0.6250 (15.880)	.188 SQ. X 1.50	.507-.517	5.741 (145.82)	3.000 (76.20)	0.10 (2.5)	5.00 (127.0)	0.44 (11.2)	0.281 (7.14)	THRU
	M3 (Square)	23.0 (10.5)	9.2 (233.7)	9.2 (233.7)	12.38 (314.5)	4.9 (124.5)	1.90 (48.3)	0.6250 (15.880)	.188 SQ. X 1.50	.507-.517	5.875 (149.23)	4.500 (114.30)	0.10 (2.5)	5.00 (127.0)	0.44 (11.2)	-	3/8-16 THRU
	NEMA 42	23.0 (10.5)	9.2 (233.7)	9.2 (233.7)	12.38 (314.5)	4 (101.6)	1.32 (33.5)	0.6250 (15.880)	.188 SQ. X 1.50	.507-.517	4.950 (125.73)	2.187 (55.55)	0.06 (1.5)	4.25 (108.0)	0.44 (11.2)	0.281 (7.14)	THRU
	NEMA 56C	23.0 (10.5)	9.2 (233.7)	9.2 (233.7)	12.38 (314.5)	4.9 (124.5)	2.06 (52.3)	0.6250 (15.880)	.188 SQ. X 1.50	.507-.517	5.875 (149.23)	4.500 (114.30)	0.09 (2.3)	6.50 (165.1)	0.44 (11.2)	-	3/8-16 THRU

Dimensions are in **inches** (mm)

C1 = BARE MOTOR, C2 = MOTOR WITH TACHOMETER OR ENCODER, C3 = MOTOR WITH TACHOMETER AND ENCODER

GLENTEK GMR4940 DC BRUSH SERVO MOTOR DIMENSIONS

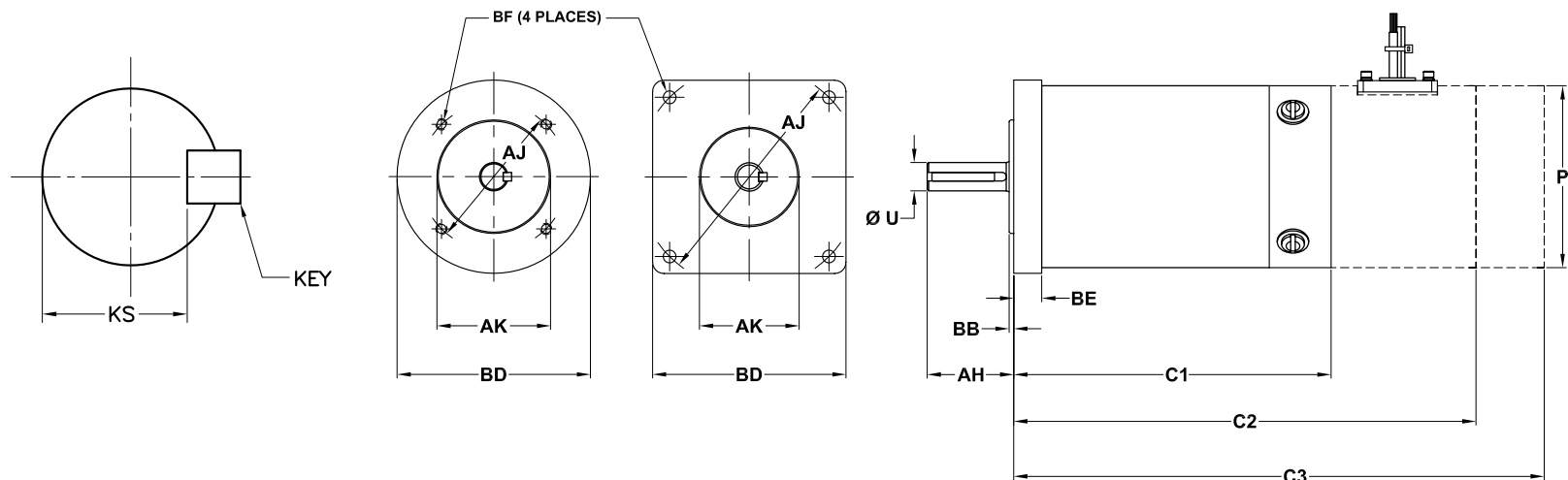


Model Number	Flange Type	Lbs (Kg)	C1	C2	C3	P (max)	Shaft				Flange/Face				Mounting Hole		
							AH	U (max)	KEY	KS	AJ	AK	BB	BD	BE (max)	BF Dia.	Tap
GMR4940	Round	28.0 (12.7)	11.6 (294.6)	11.6 (294.6)	14.78 (375.4)	4.9 (124.5)	1.90 (48.3)	0.6250 (15.880)	.188 SQ. X 1.50	.507-.517	3.250 (82.55)	2.498 (63.45)	0.10 (2.5)	4.00 (101.6)	0.62 (15.7)	-	1/4-20 X .50
	M1 (Square)	28.0 (12.7)	11.6 (294.6)	11.6 (294.6)	14.78 (375.4)	4.9 (124.5)	1.90 (48.3)	0.6250 (15.880)	.188 SQ. X 1.50	.507-.517	4.950 (125.73)	2.187 (55.55)	0.06 (1.5)	4.25 (108.0)	0.44 (11.2)	0.281 (7.14)	THRU
	M2 (Square)	28.0 (12.7)	11.6 (294.6)	11.6 (294.6)	14.78 (375.4)	4.9 (124.5)	1.90 (48.3)	0.6250 (15.880)	.188 SQ. X 1.50	.507-.517	5.741 (145.82)	3.000 (76.20)	0.10 (2.5)	5.00 (127.0)	0.44 (11.2)	0.281 (7.14)	THRU
	M3 (Square)	28.0 (12.7)	11.6 (294.6)	11.6 (294.6)	14.78 (375.4)	4.9 (124.5)	1.90 (48.3)	0.6250 (15.880)	.188 SQ. X 1.50	.507-.517	5.875 (149.23)	4.500 (114.30)	0.10 (2.5)	5.00 (127.0)	0.44 (11.2)	-	3/8-16 THRU
	NEMA 42	28.0 (12.7)	11.6 (294.6)	11.6 (294.6)	14.78 (375.4)	4 (101.6)	1.32 (33.5)	0.6250 (15.880)	.188 SQ. X 1.50	.507-.517	4.950 (125.73)	2.187 (55.55)	0.06 (1.5)	4.25 (108.0)	0.44 (11.2)	0.281 (7.14)	THRU
	NEMA 56C	28.0 (12.7)	11.6 (294.6)	11.6 (294.6)	14.78 (375.4)	4.9 (124.5)	2.06 (52.3)	0.6250 (15.880)	.188 SQ. X 1.50	.507-.517	5.875 (149.23)	4.500 (114.30)	0.09 (2.3)	6.50 (165.1)	0.44 (11.2)	-	3/8-16 THRU

Dimensions are in **inches** (mm)

C1 = BARE MOTOR, C2 = MOTOR WITH TACHOMETER OR ENCODER, C3 = MOTOR WITH TACHOMETER AND ENCODER

GLENTEK GMR4950 DC BRUSH SERVO MOTOR DIMENSIONS



Model Number	Flange Type	Lbs (Kg)	C1	C2	C3	P (max)	Shaft				Flange/Face				Mounting Hole		
							AH	U (max)	KEY	KS	AJ	AK	BB	BD	BE (max)	BF Dia.	Tap
GMR4950	Round	32.0 (14.5)	12.6 (320.0)	12.6 (320.0)	15.78 (400.8)	4.9 (124.5)	1.90 (48.3)	0.6250 (15.880)	.188 SQ. X 1.50	.507-.517	3.250 (82.55)	2.498 (63.45)	0.10 (2.5)	4.00 (101.6)	0.62 (15.7)	-	1/4-20 X .50
	M1 (Square)	32.0 (14.5)	12.6 (320.0)	12.6 (320.0)	15.78 (400.8)	4.9 (124.5)	1.90 (48.3)	0.6250 (15.880)	.188 SQ. X 1.50	.507-.517	4.950 (125.73)	2.187 (55.55)	0.06 (1.5)	4.25 (108.0)	0.44 (11.2)	0.281 (7.14)	THRU
	M2 (Square)	32.0 (14.5)	12.6 (320.0)	12.6 (320.0)	15.78 (400.8)	4.9 (124.5)	1.90 (48.3)	0.6250 (15.880)	.188 SQ. X 1.50	.507-.517	5.741 (145.82)	3.000 (76.20)	0.10 (2.5)	5.00 (127.0)	0.44 (11.2)	0.281 (7.14)	THRU
	M3 (Square)	32.0 (14.5)	12.6 (320.0)	12.6 (320.0)	15.78 (400.8)	4.9 (124.5)	1.90 (48.3)	0.6250 (15.880)	.188 SQ. X 1.50	.507-.517	5.875 (149.23)	4.500 (114.30)	0.10 (2.5)	5.00 (127.0)	0.44 (11.2)	-	3/8-16 THRU
	NEMA 42	32.0 (14.5)	12.6 (320.0)	12.6 (320.0)	15.78 (400.8)	4 (101.6)	1.32 (33.5)	0.6250 (15.880)	.188 SQ. X 1.50	.507-.517	4.950 (125.73)	2.187 (55.55)	0.06 (1.5)	4.25 (108.0)	0.44 (11.2)	0.281 (7.14)	THRU
	NEMA 56C	32.0 (14.5)	12.6 (320.0)	12.6 (320.0)	15.78 (400.8)	4.9 (124.5)	2.06 (52.3)	0.6250 (15.880)	.188 SQ. X 1.50	.507-.517	5.875 (149.23)	4.500 (114.30)	0.09 (2.3)	6.50 (165.1)	0.44 (11.2)	-	3/8-16 THRU

Dimensions are in **inches** (mm)

C1 = BARE MOTOR, C2 = MOTOR WITH TACHOMETER OR ENCODER, C3 = MOTOR WITH TACHOMETER AND ENCODER